



Size: 38-52
● ○ ○ ○

ALT OM

Håndarbejde

ALT OM

Håndarbeide

ALLT OM

Handarbete

Her finder du mønsteret til din størrelse:

Mønster til str. 38 – 44 finder du på side 40 – 70.

Mønster til str. Plus size 46 – 52 finder du på side 3 - 39

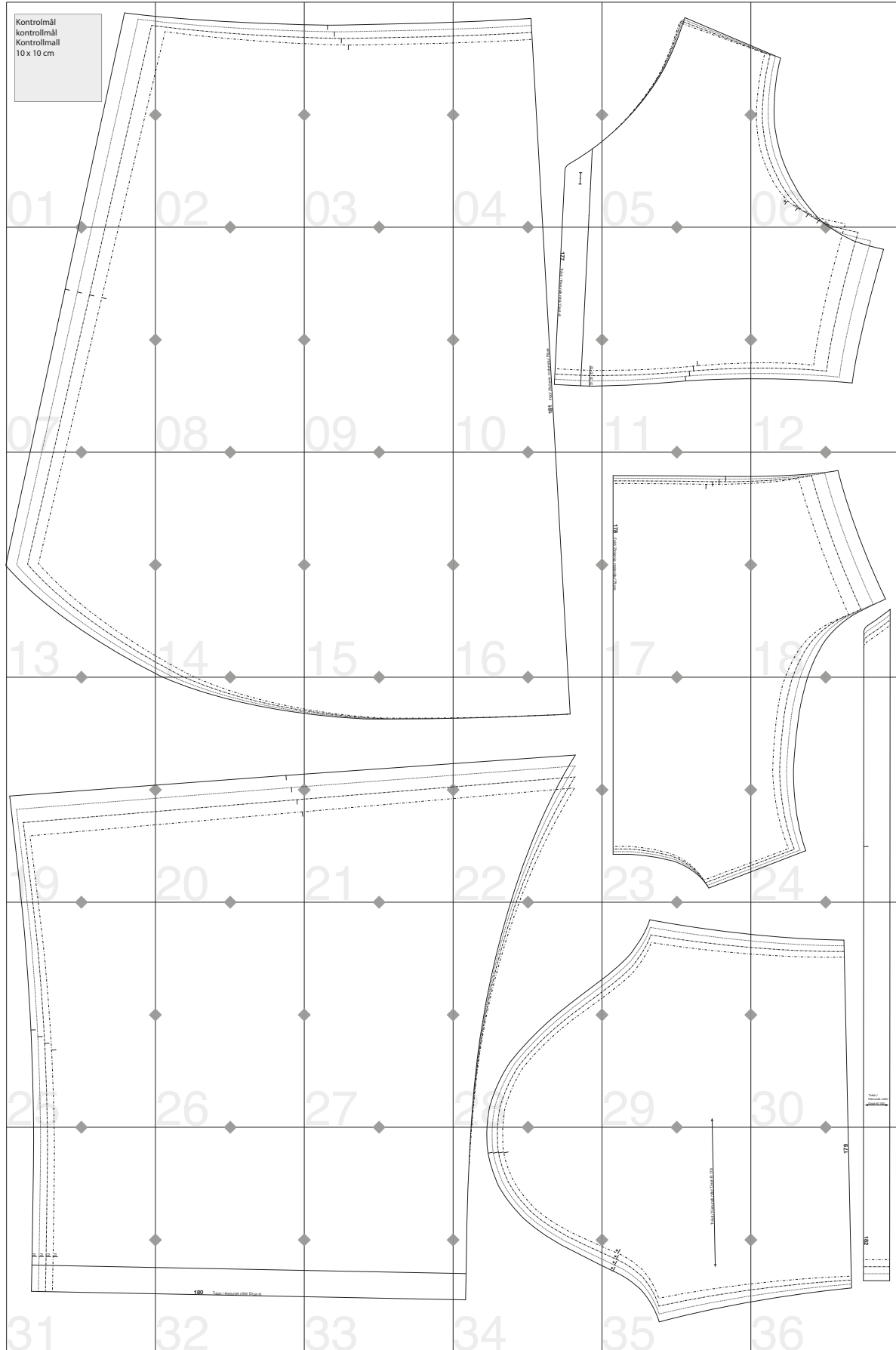
Här hittar du snittmönstret till din storlek:

Arksida 40-70: Storlek 38 – 44.

Arksida 3 – 39: Storlek Plus size 46-52

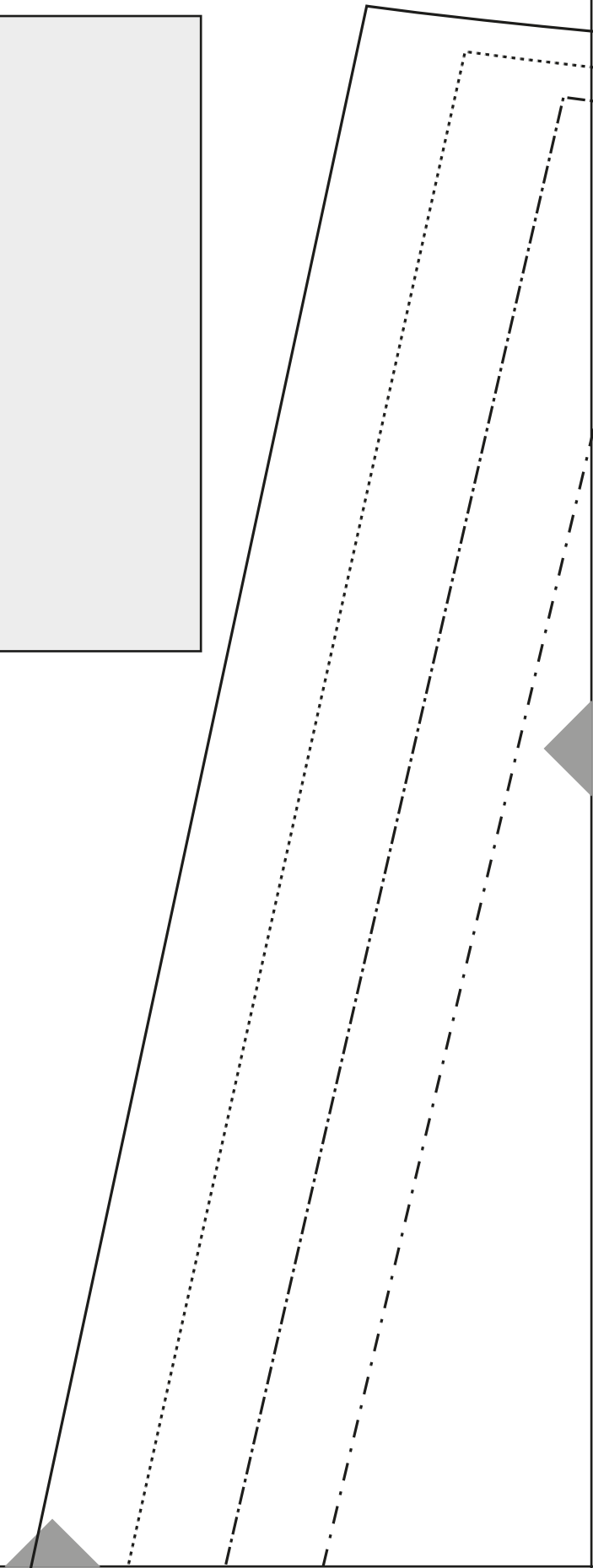
107.JUL.2019.

Str./Storlek: Plus size 46 (48) 50 (52)



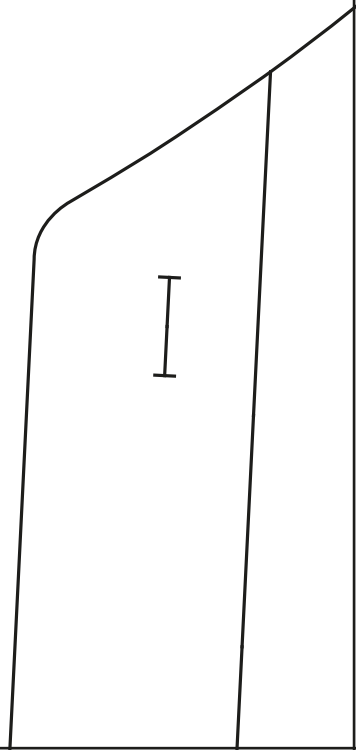
Kontrolmål
kontrollmål
Kontrollmall
10 x 10 cm

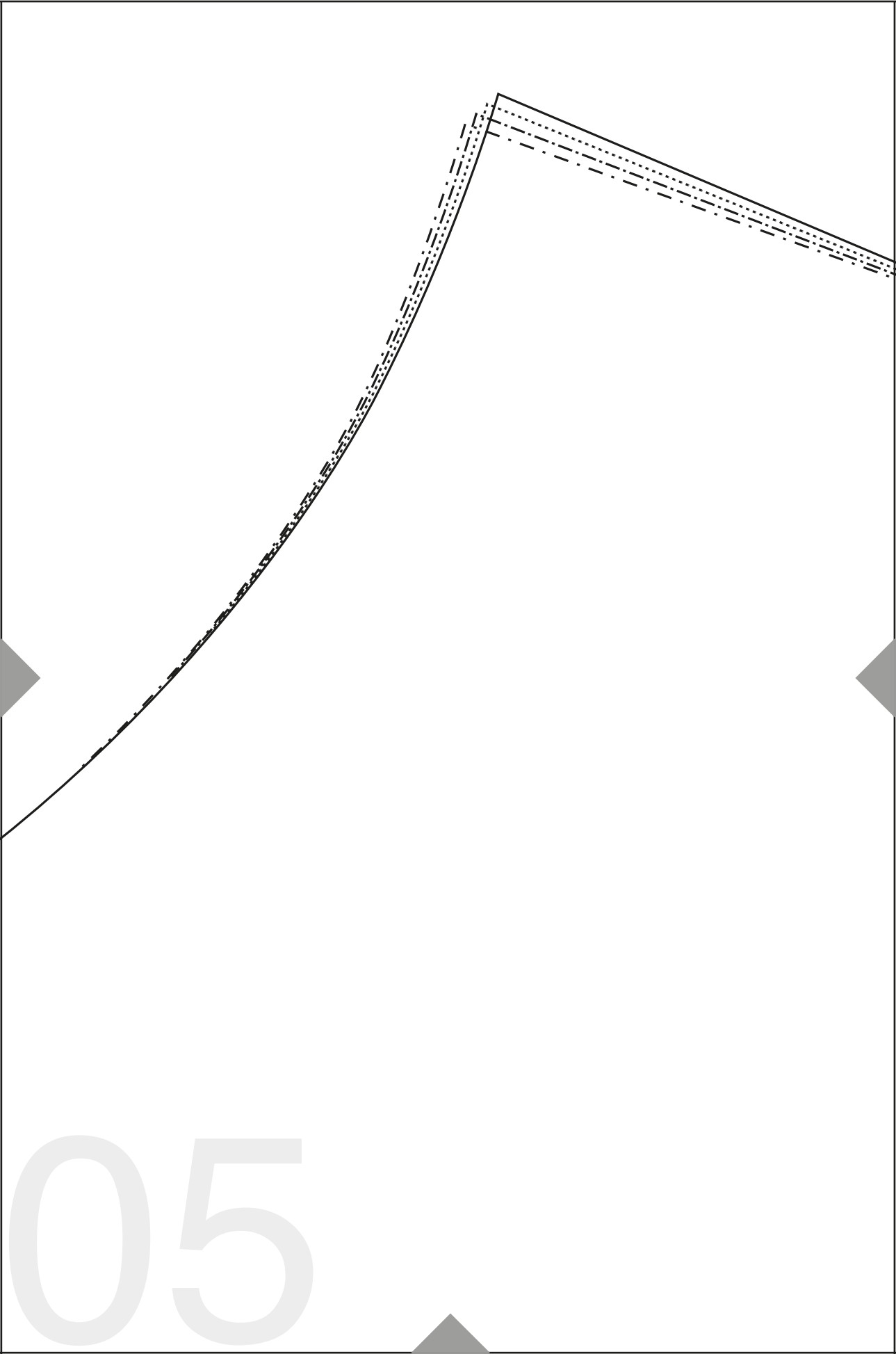
01



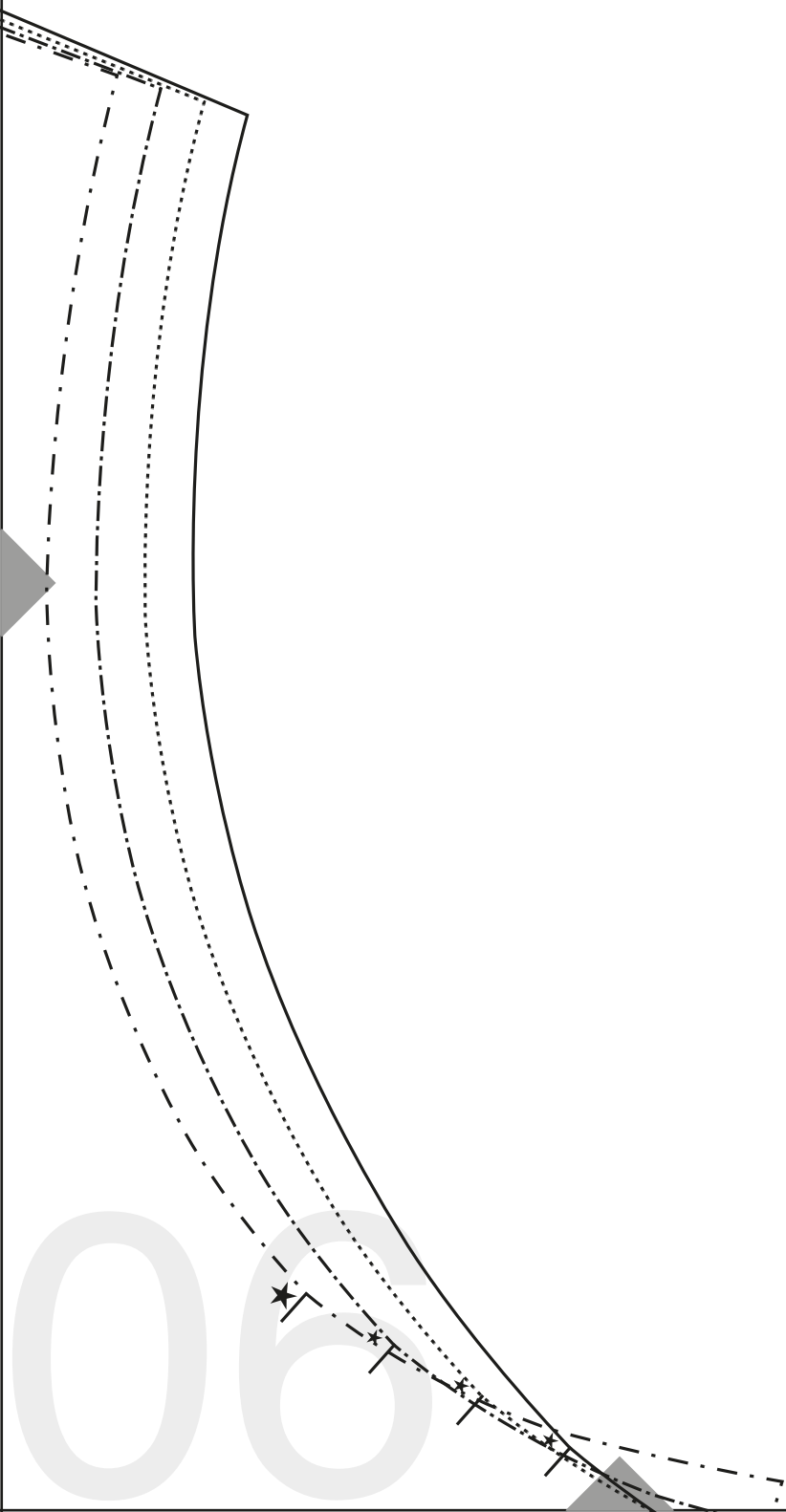
02

03



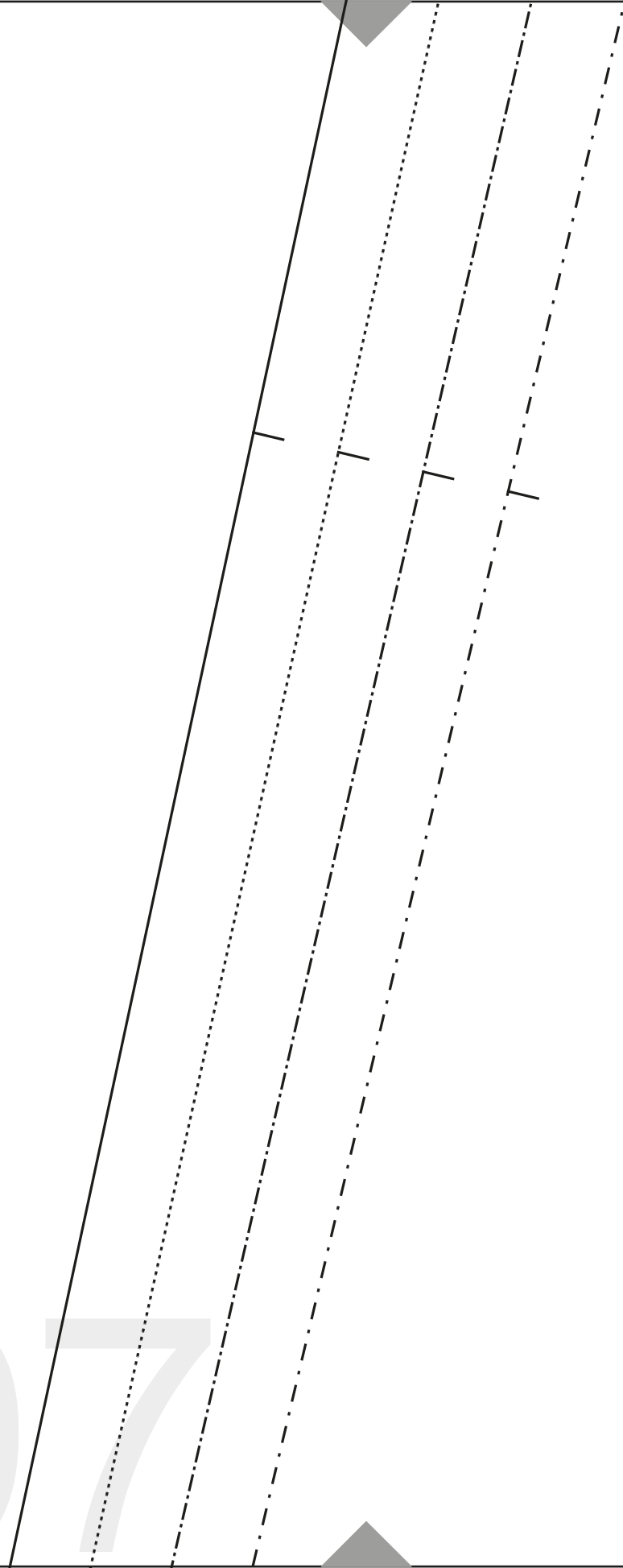


05



065

07



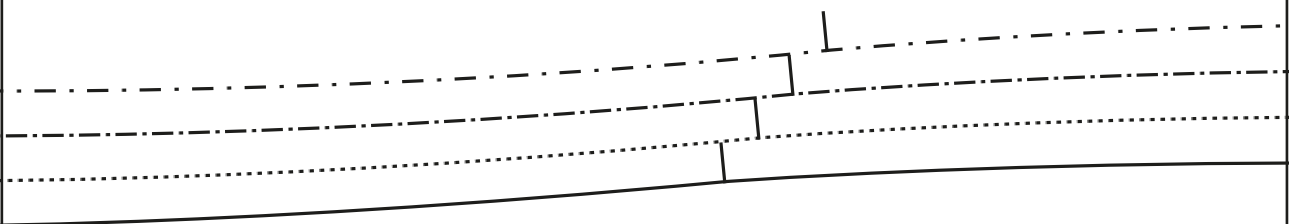
08

09

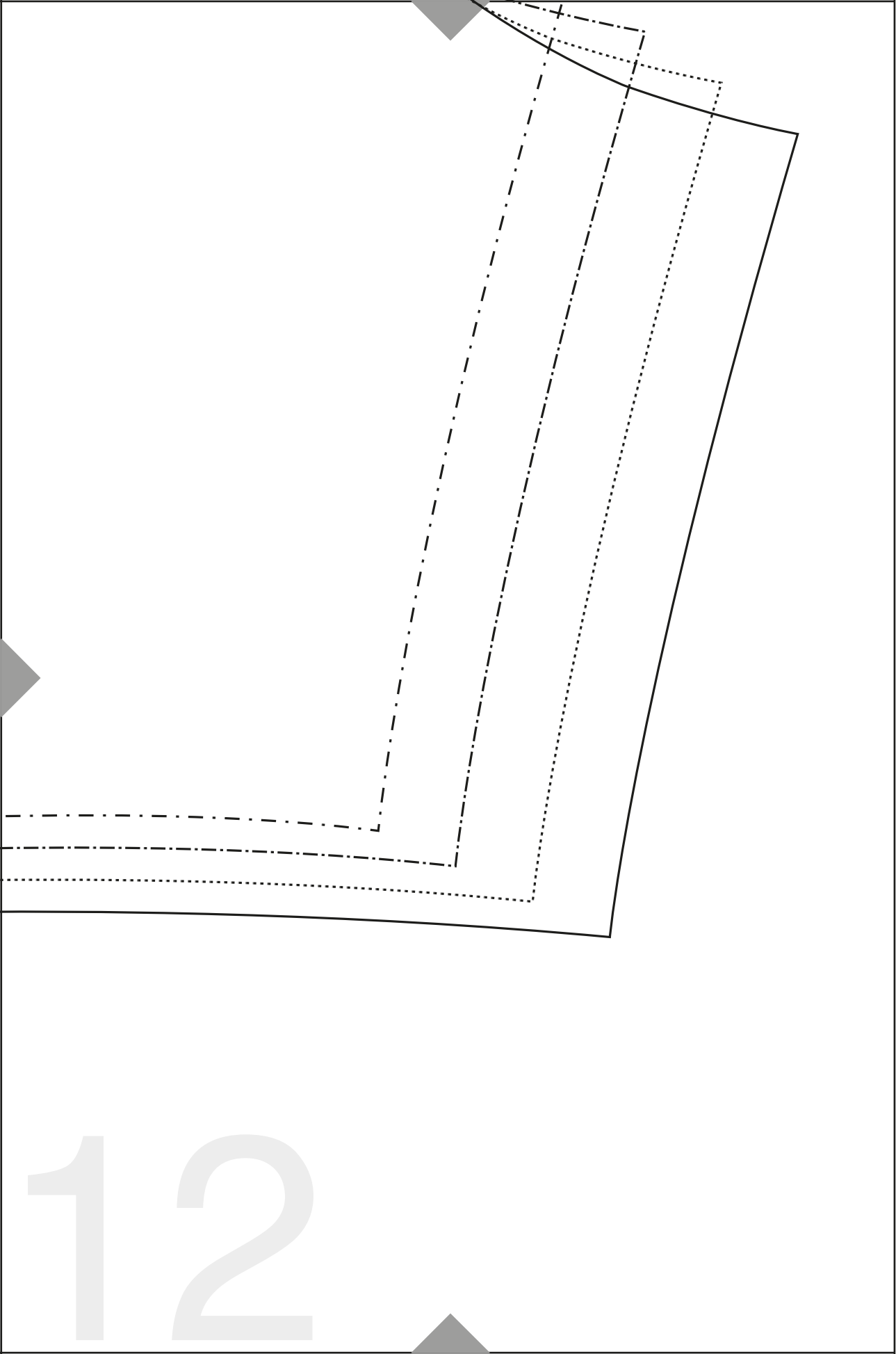
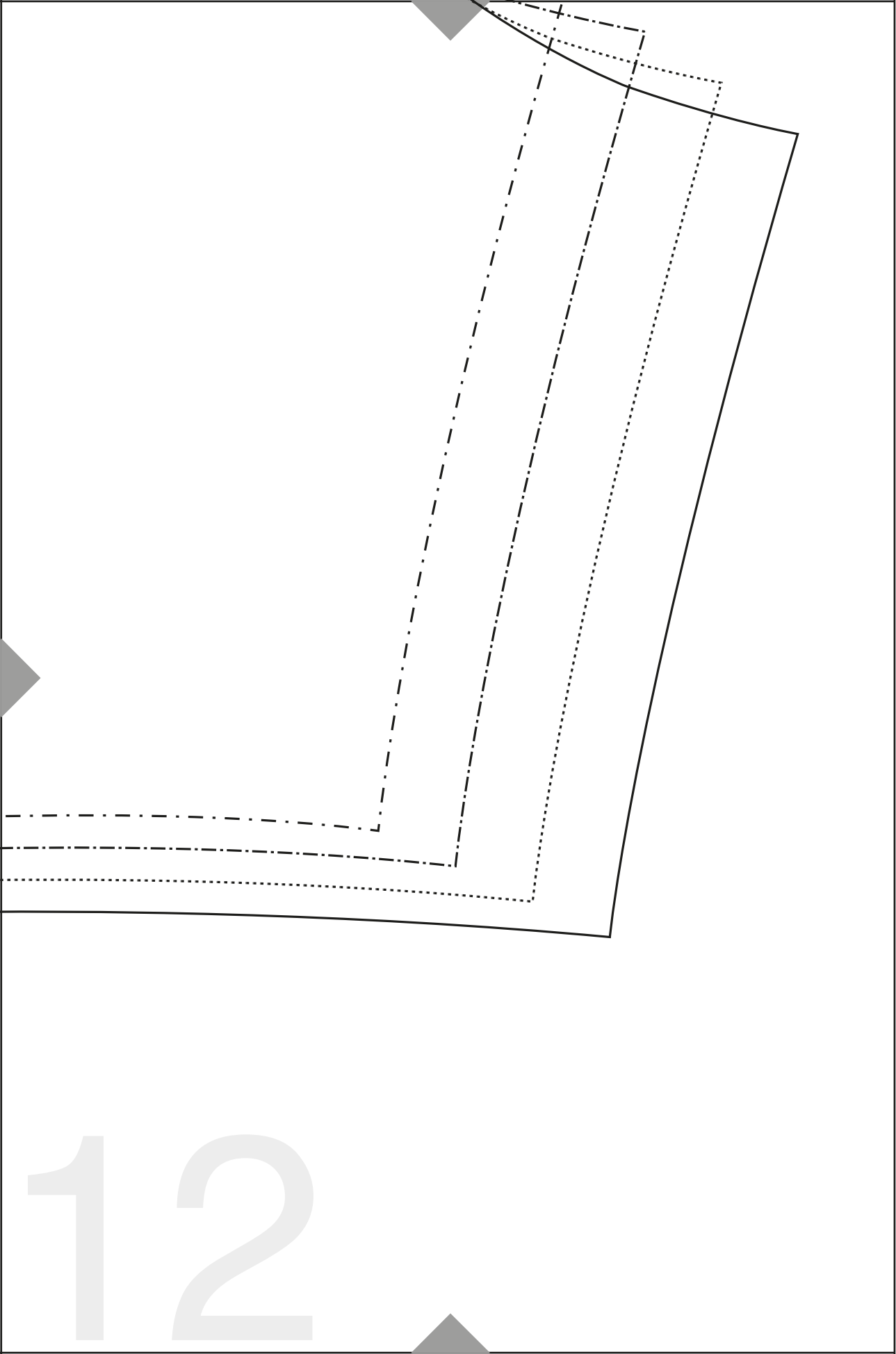
181 Fold/ Złożenie materiału/ Pliure

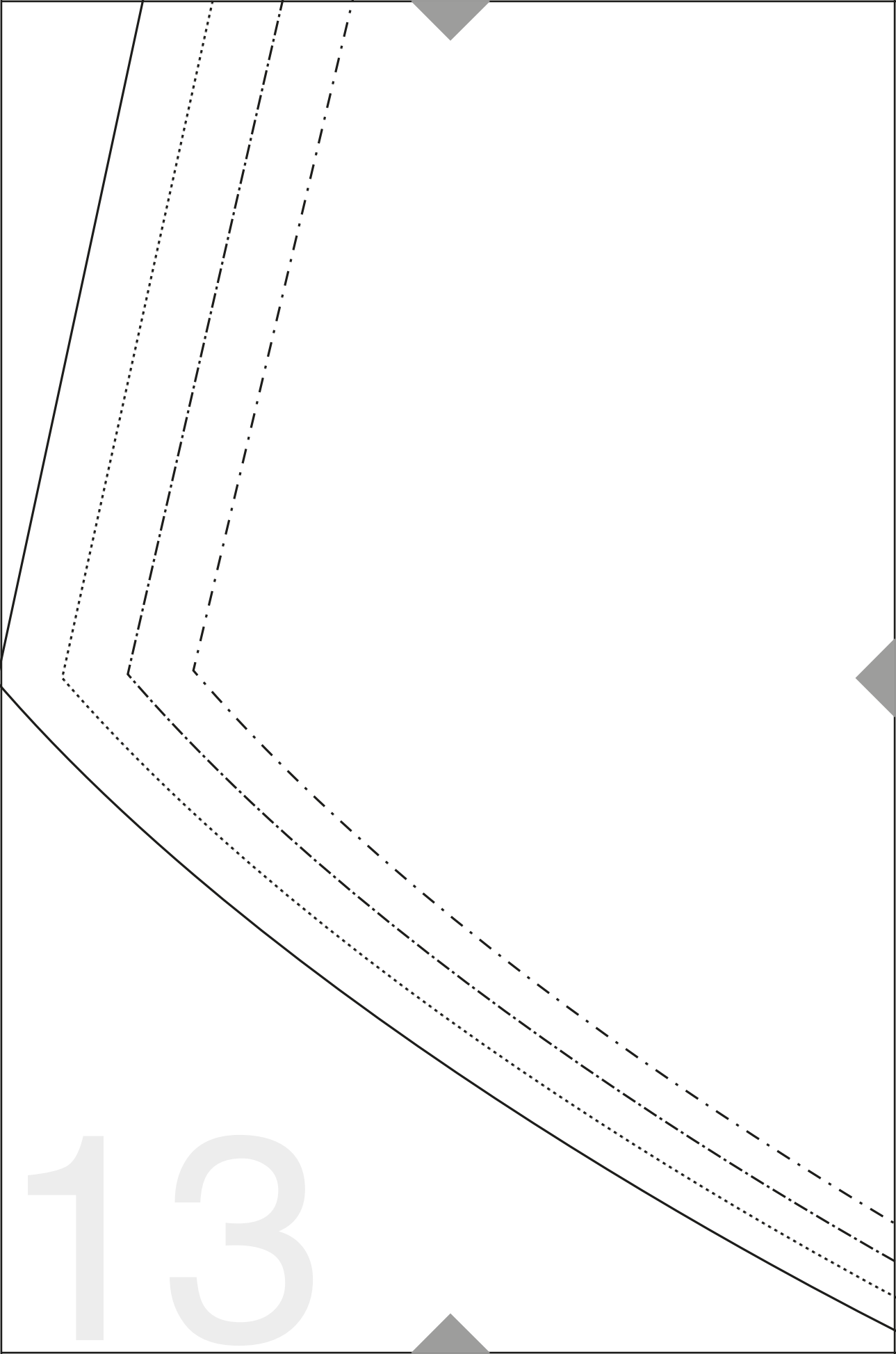
177 Trådr./ Kierunek nitki/ Droit-fil

				R
				R
				R
				R

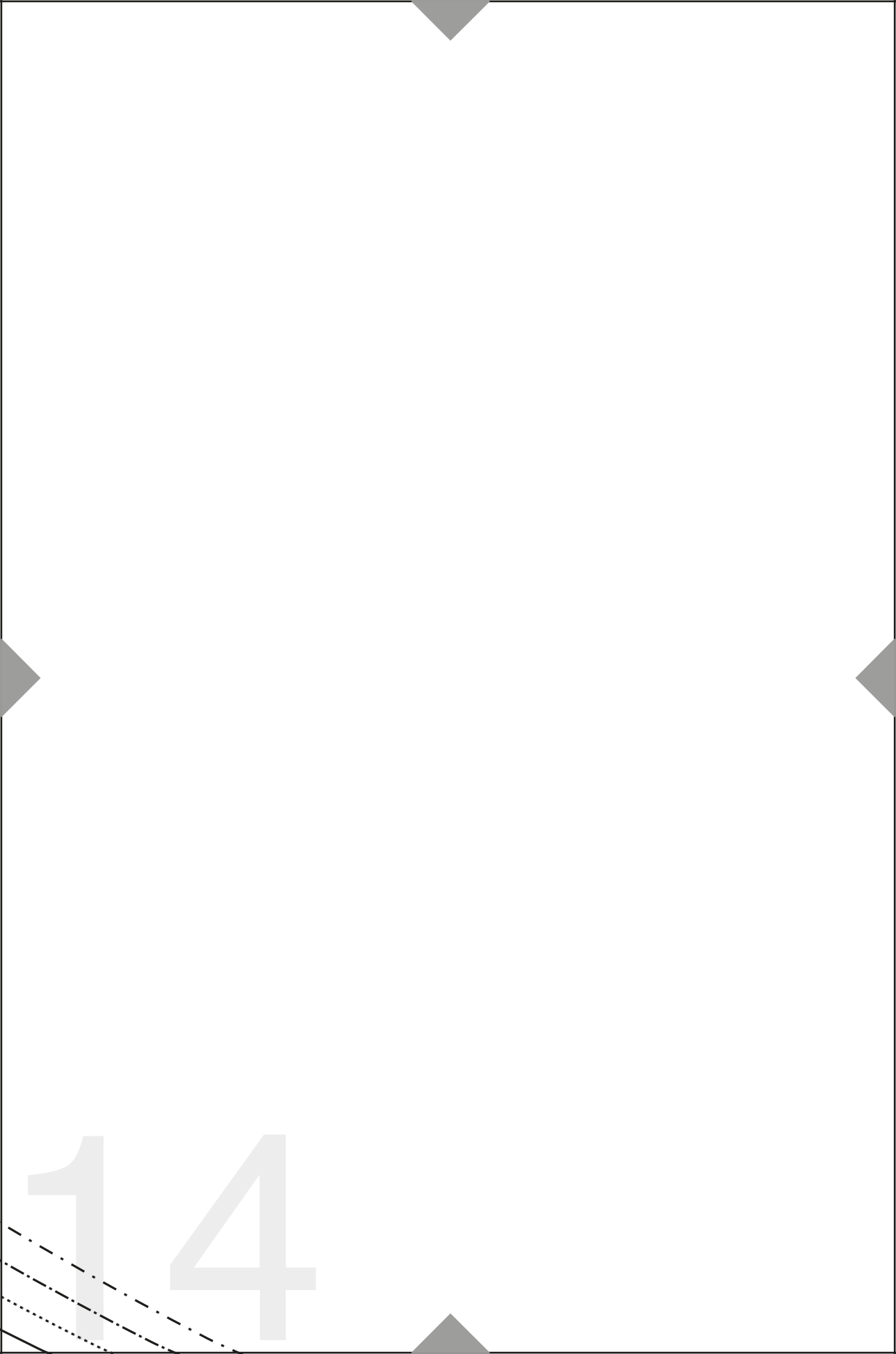


11





13



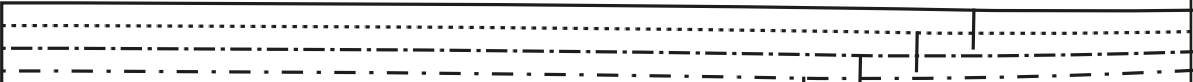
14

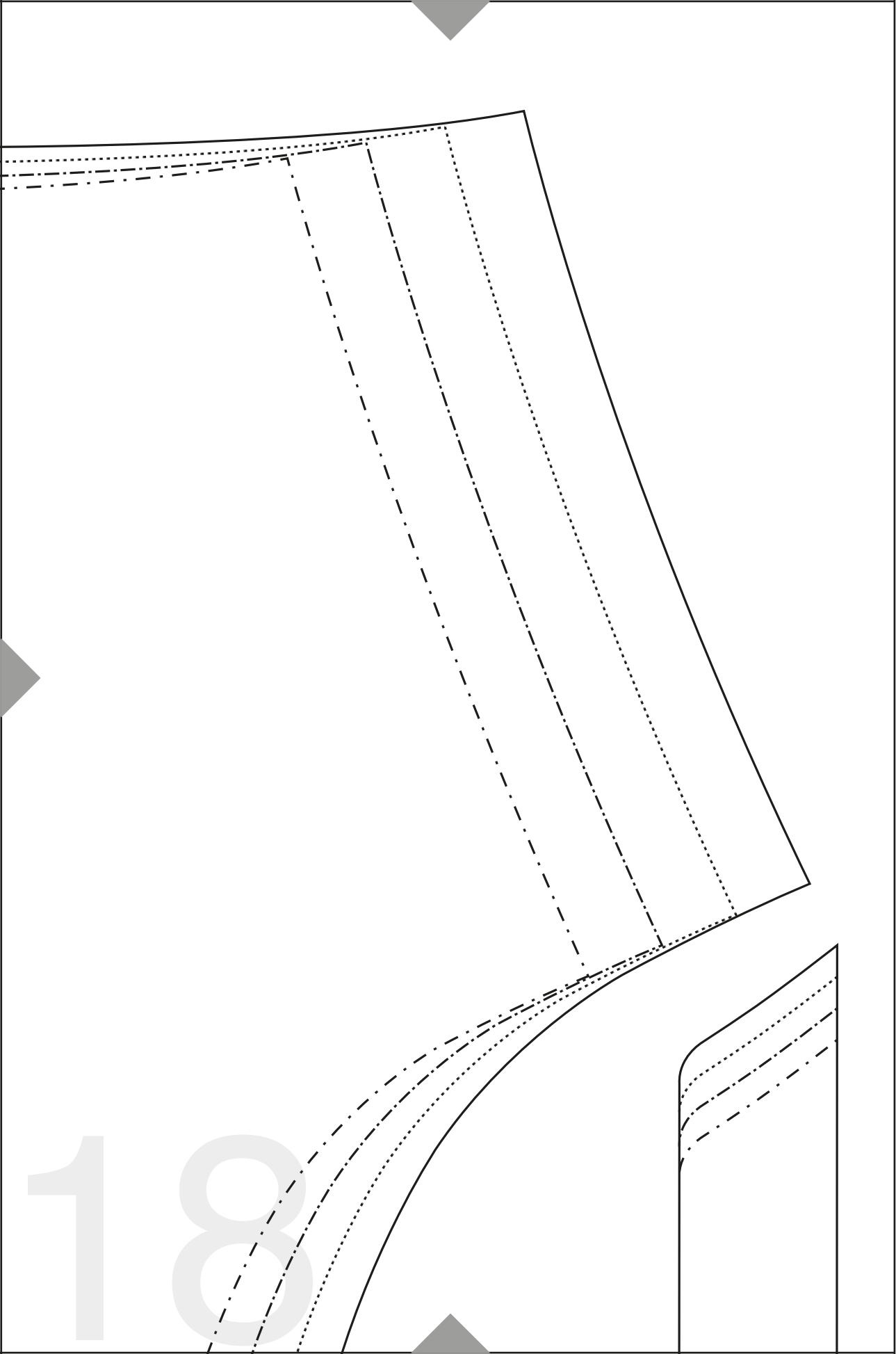
15

16

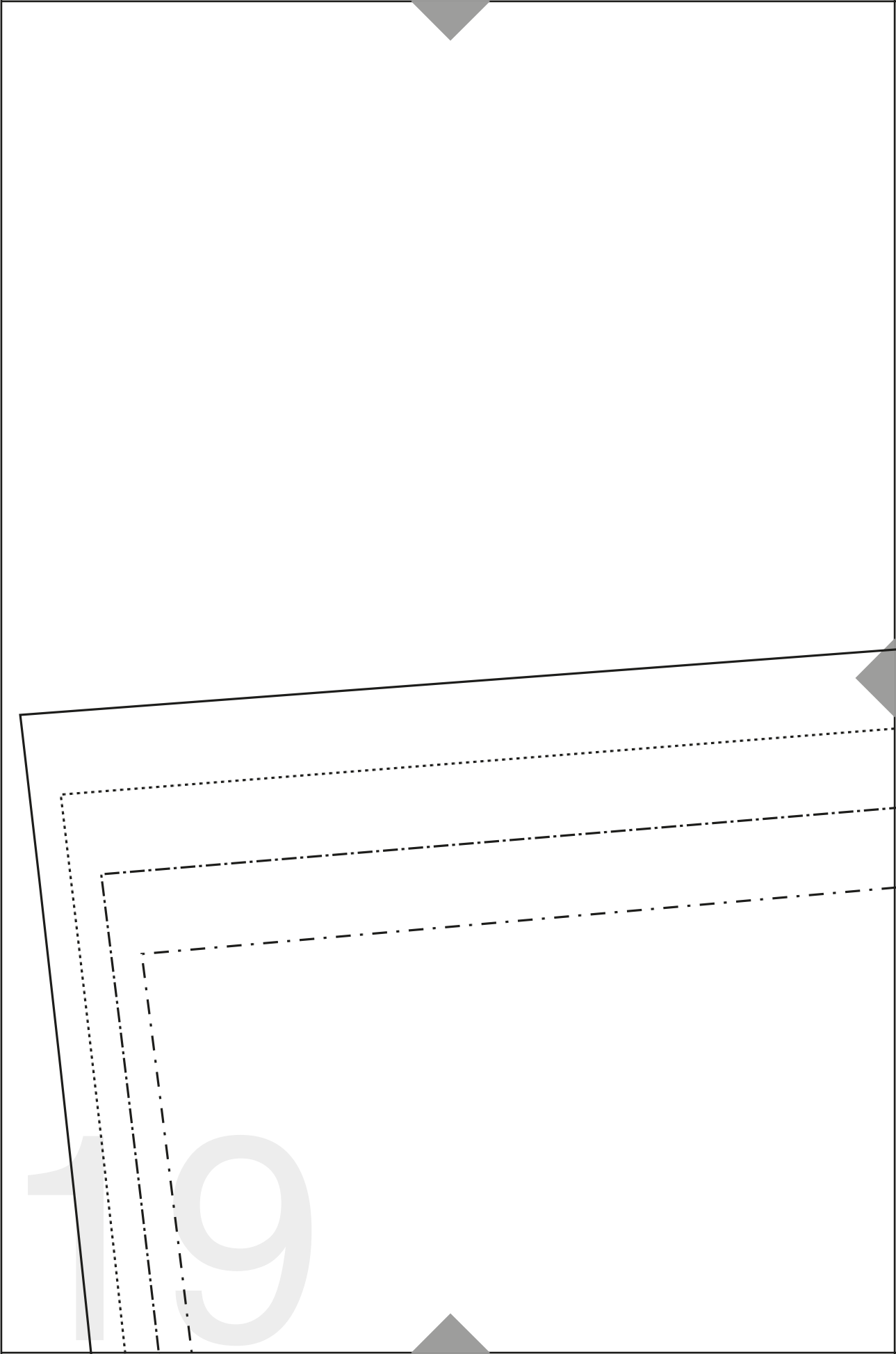
178 Fold/ Złożenie materiały/ Piłure

17

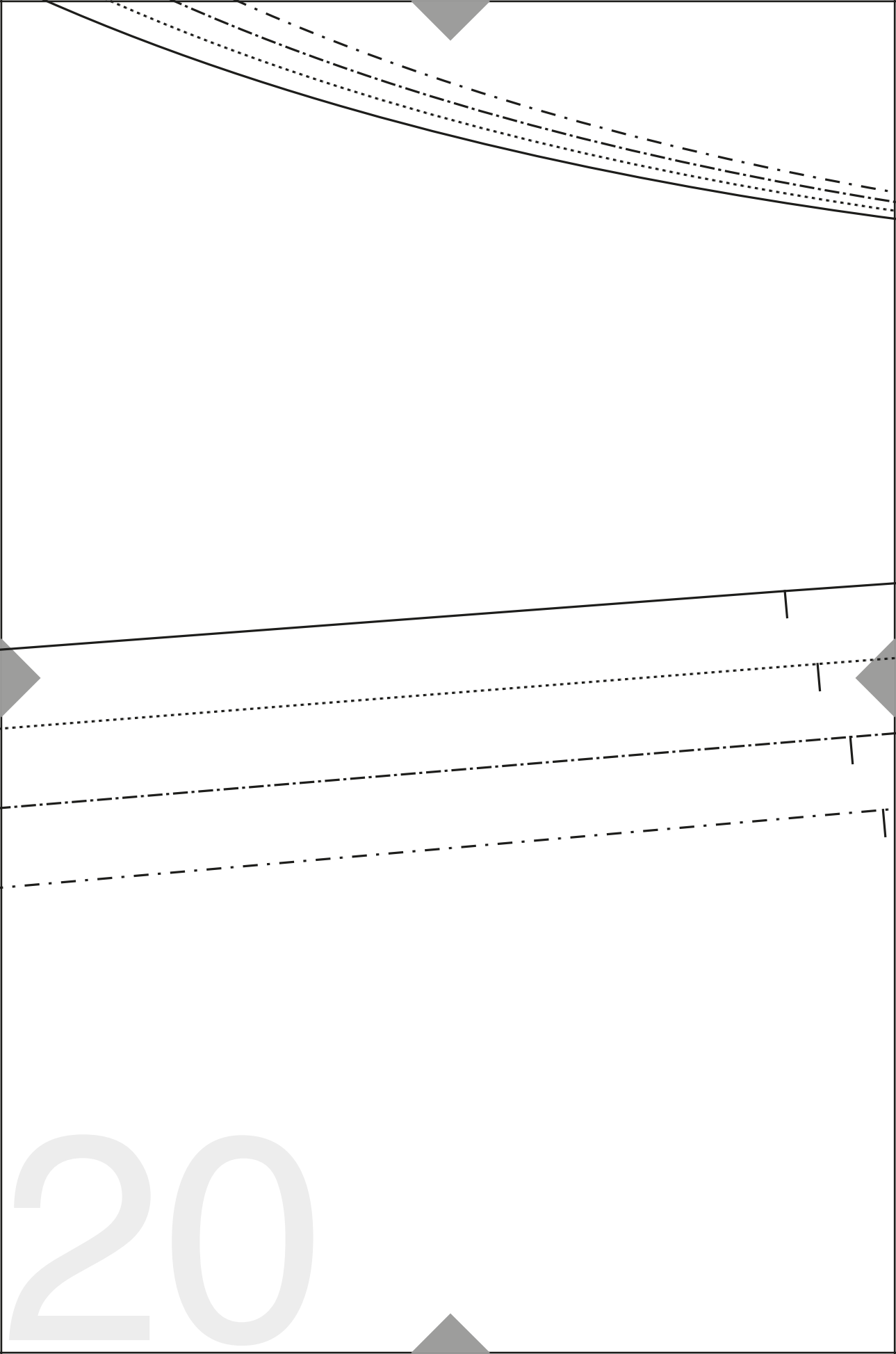




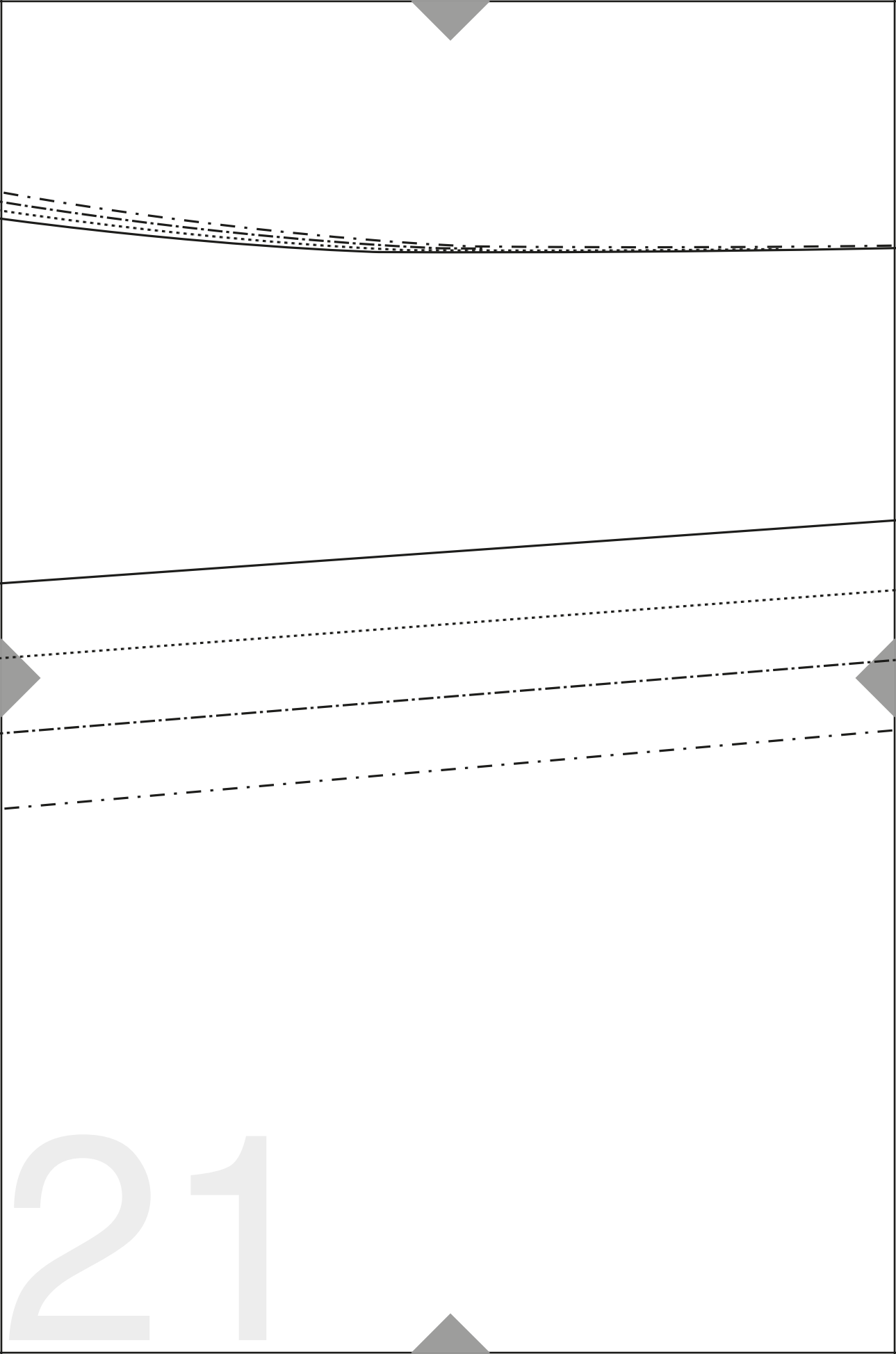
18



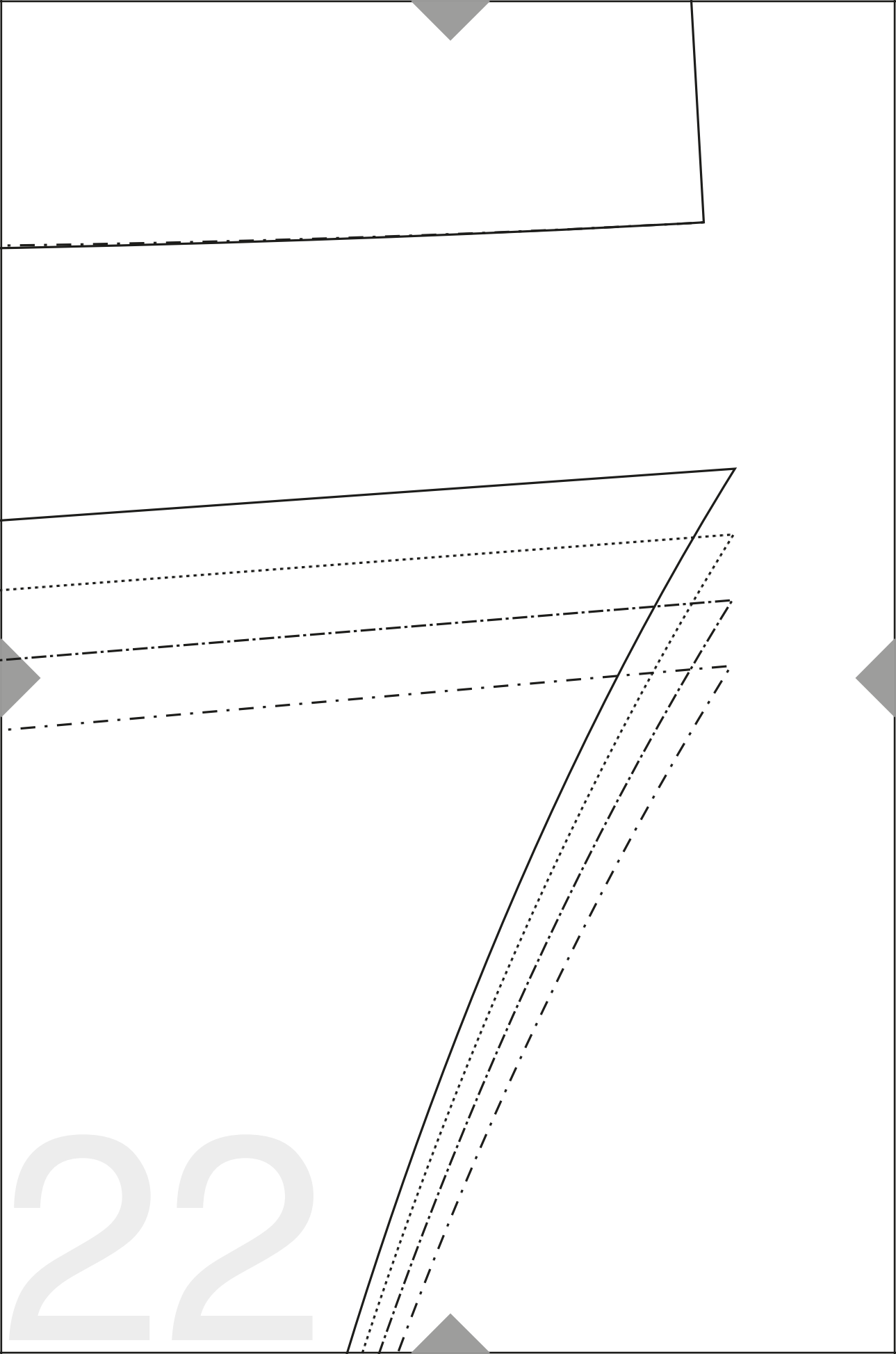
19



20

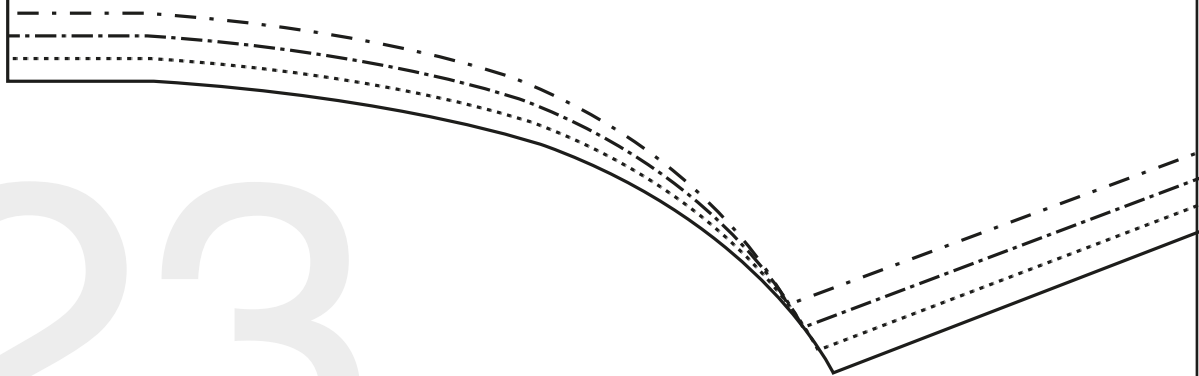


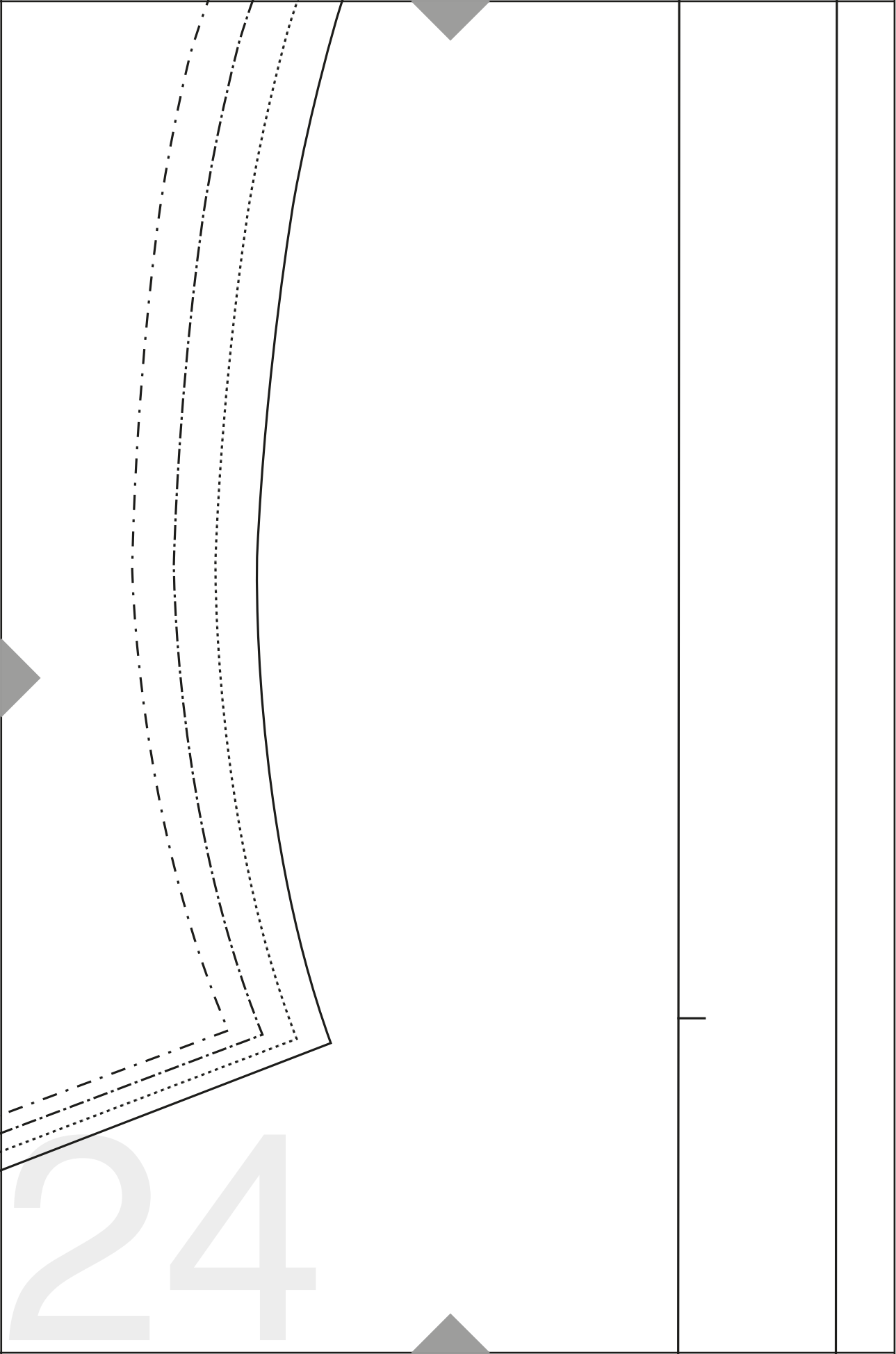
21



22

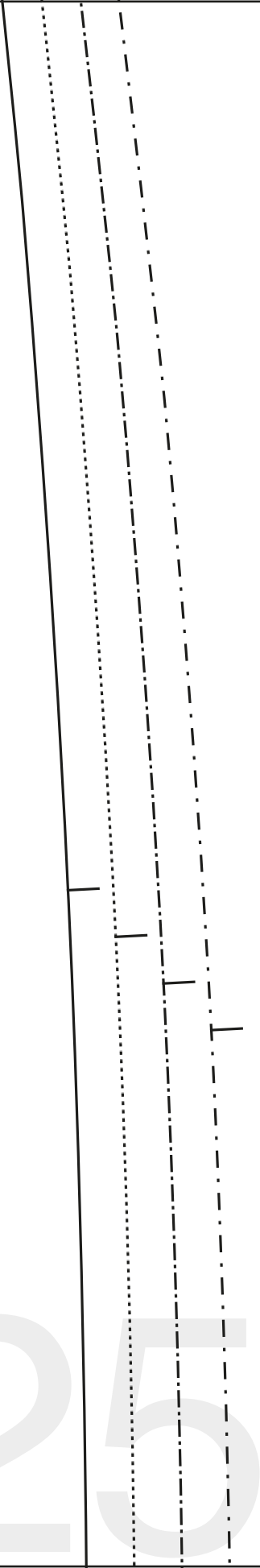
23





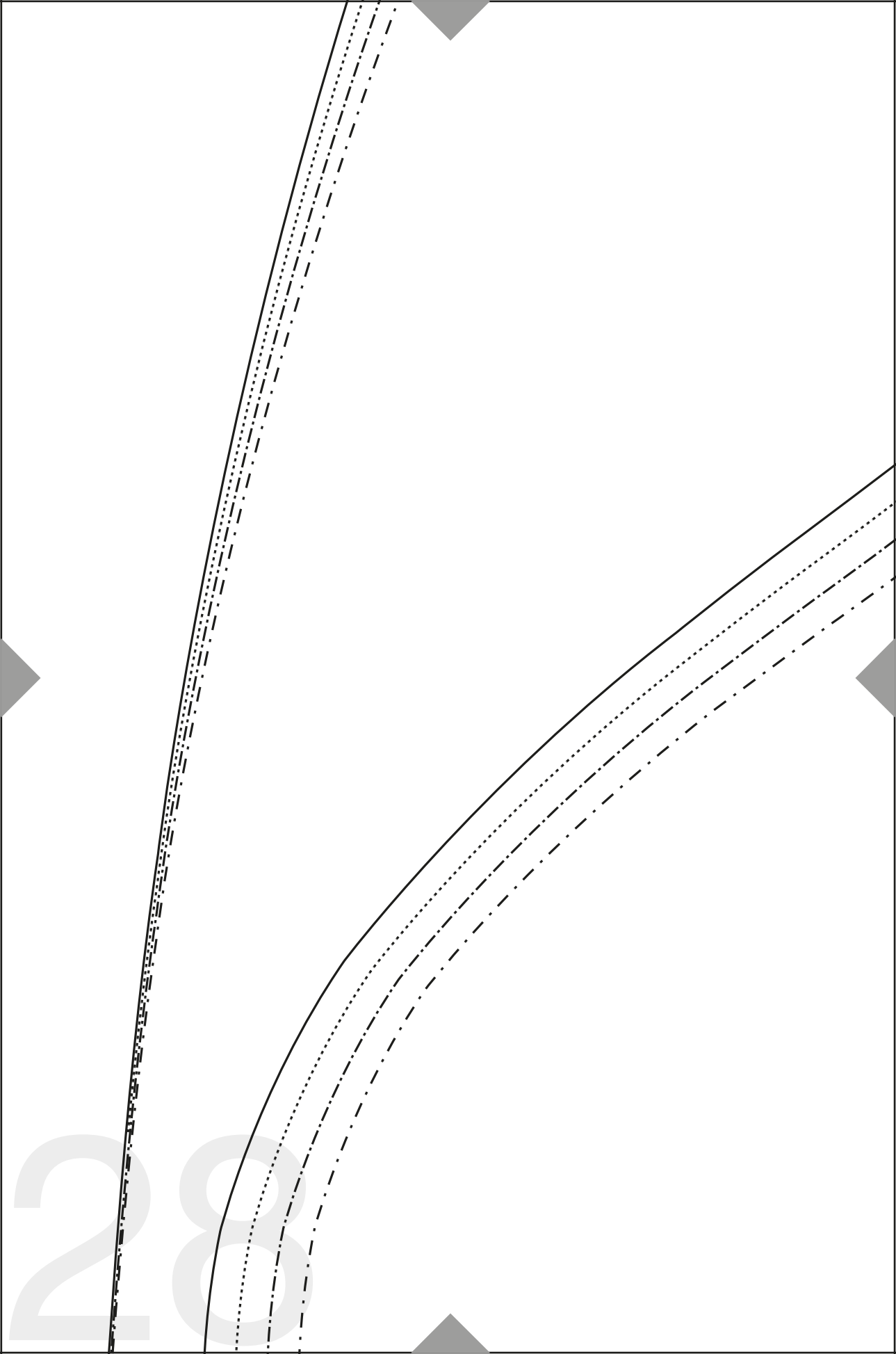
24

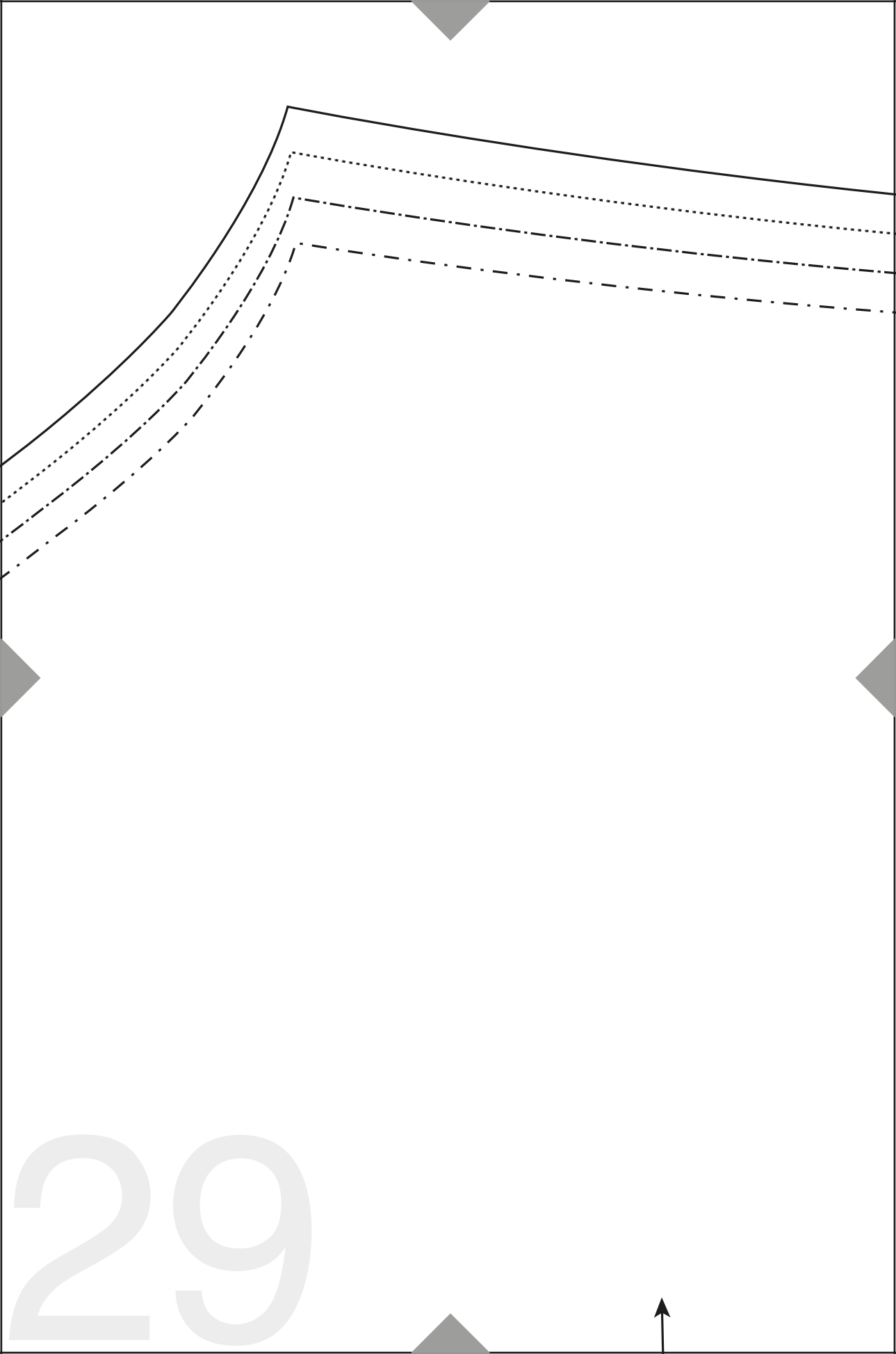
25



26

27



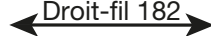


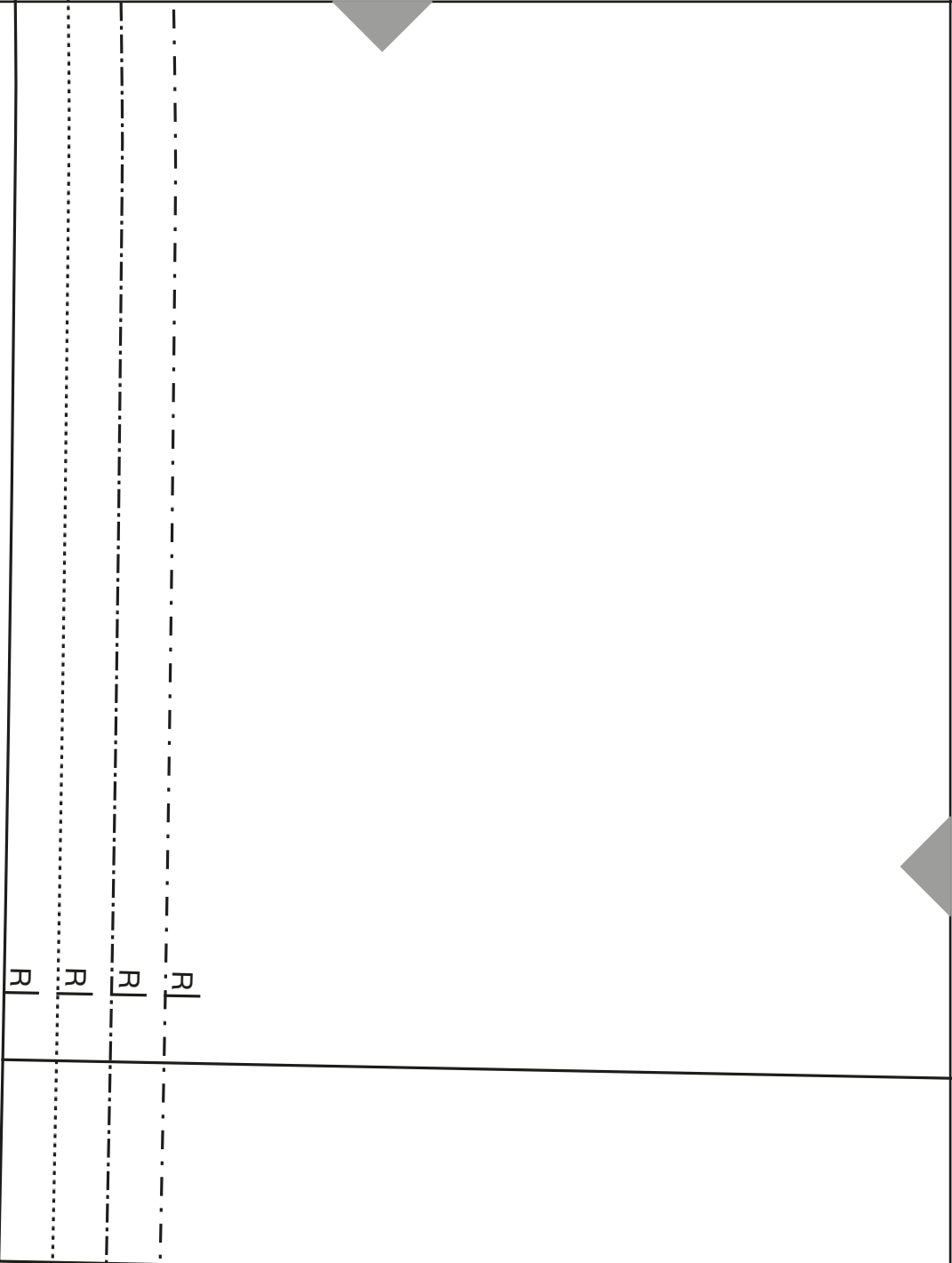
29



30

Trådr./
Kierunek nitki/
Droit-fil 182





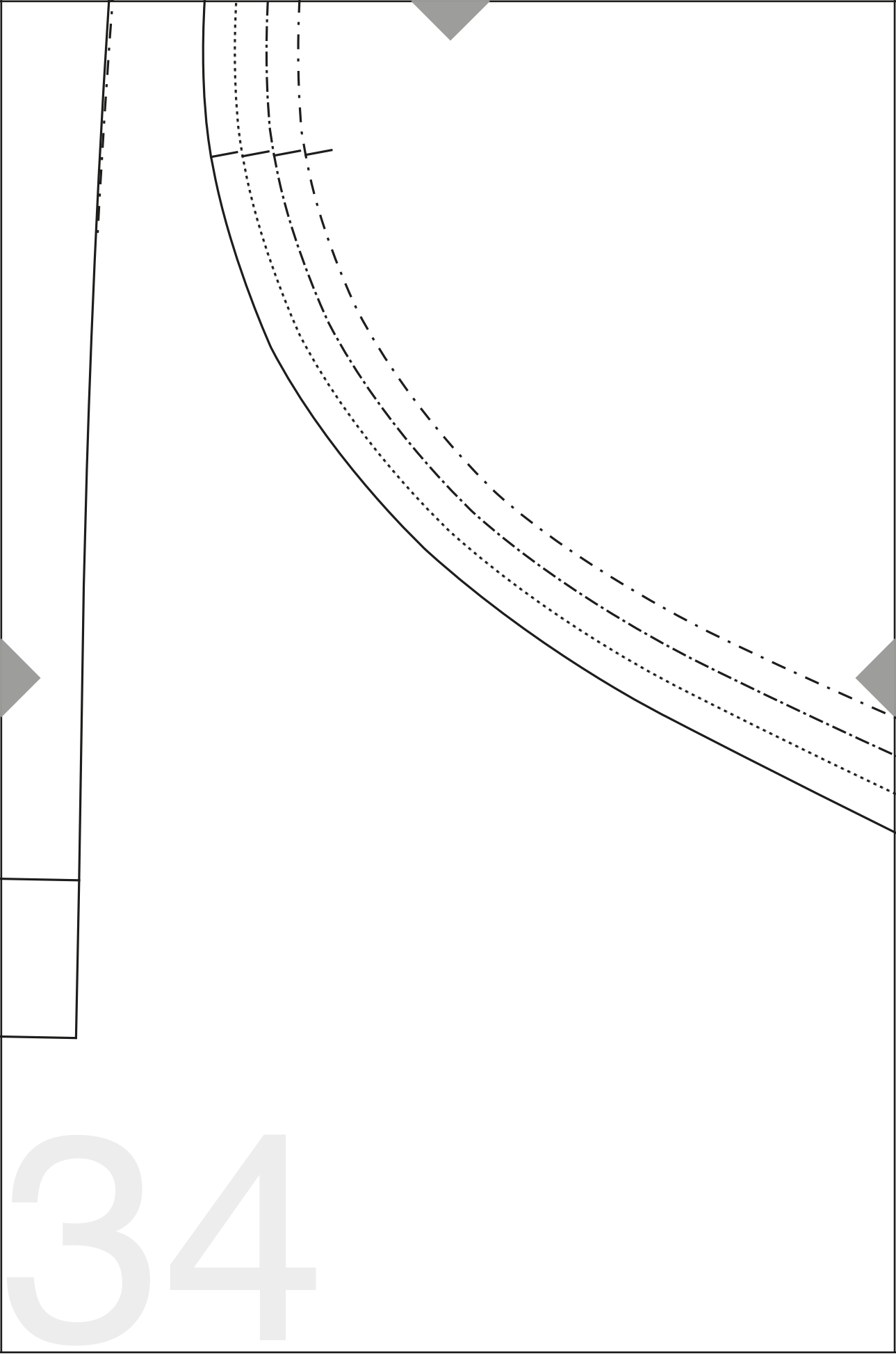
31

180

Trådr./ Kierunek nitki/ Droit-fil

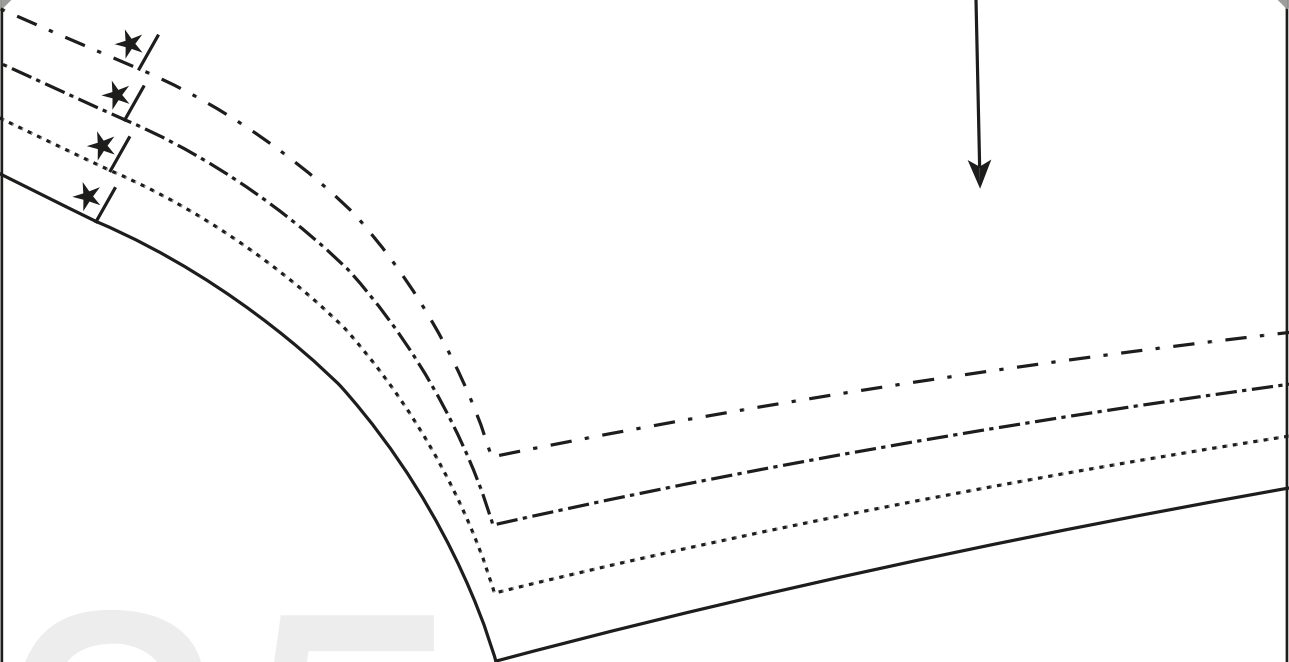
32

33



34

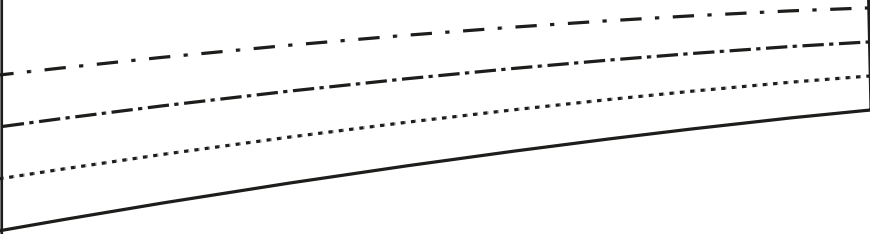
35



Trádr./ Kierunek nitki/ Droit-fil 179

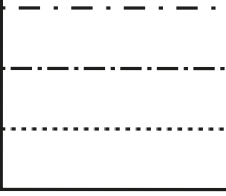


36



179

182



ALT OM

Håndarbejde

ALT OM

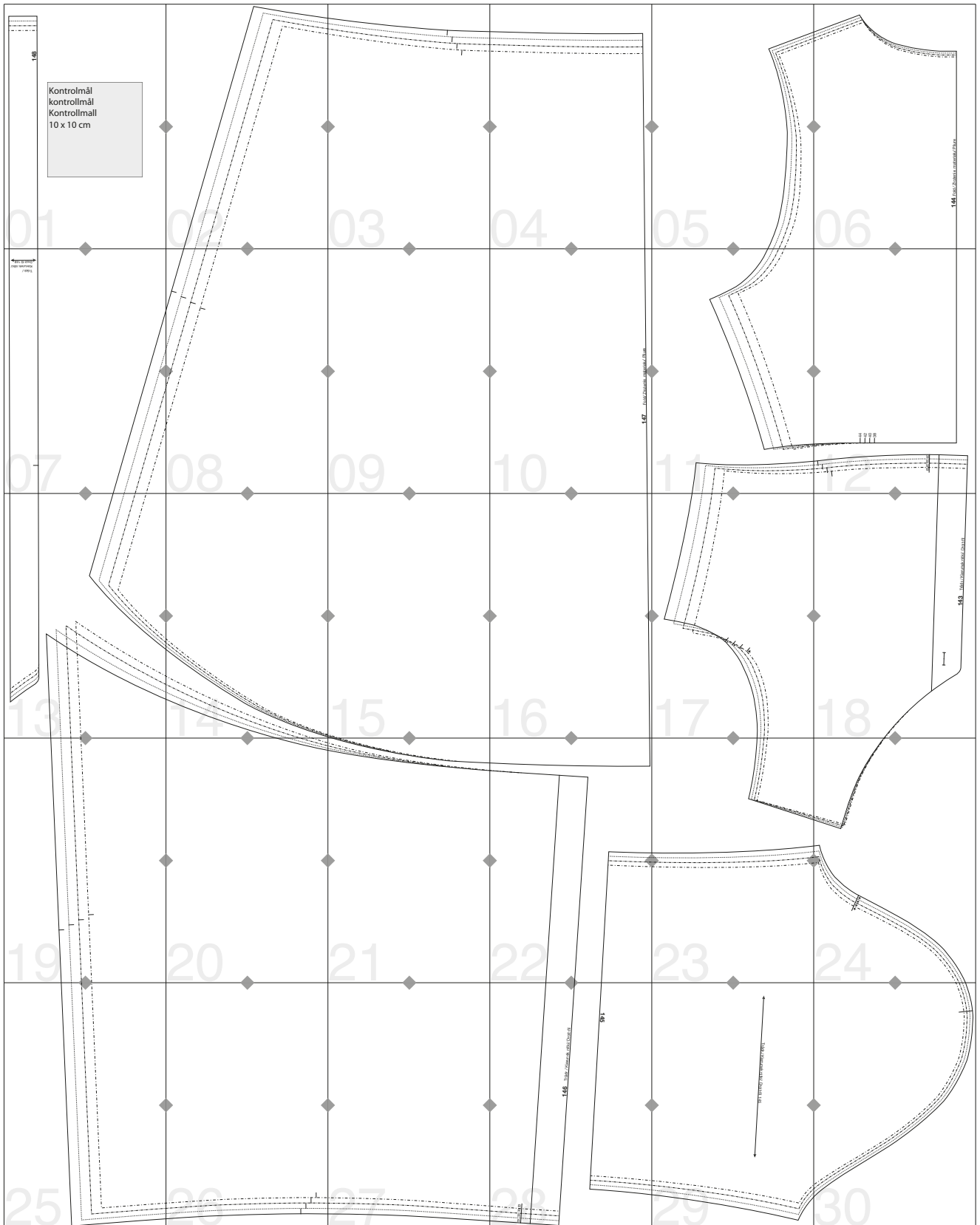
Håndarbeide

ALLT OM

Handarbete

107.JUL.2019.

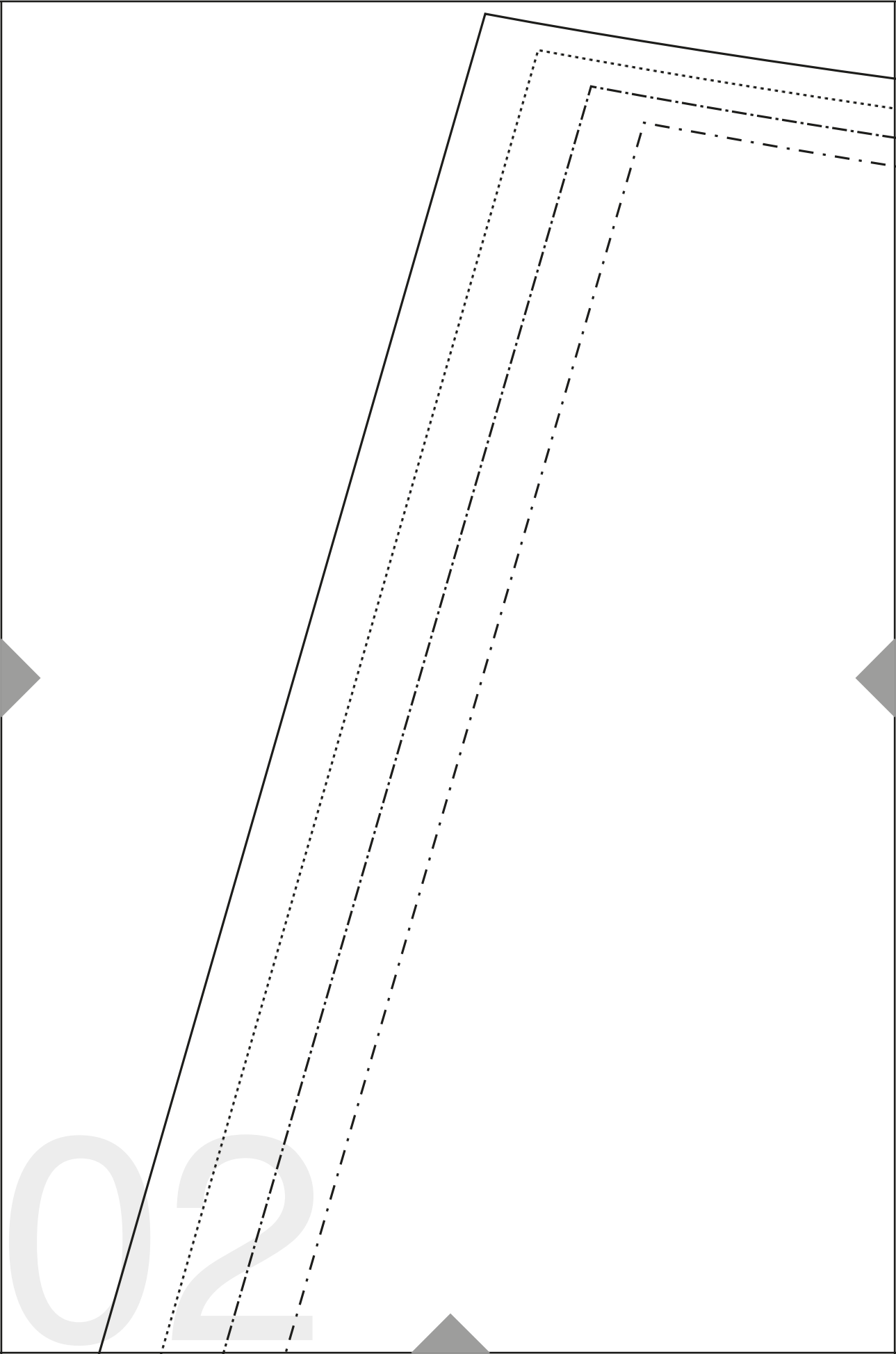
Str./Storlek: 38 (40) 42 (44)

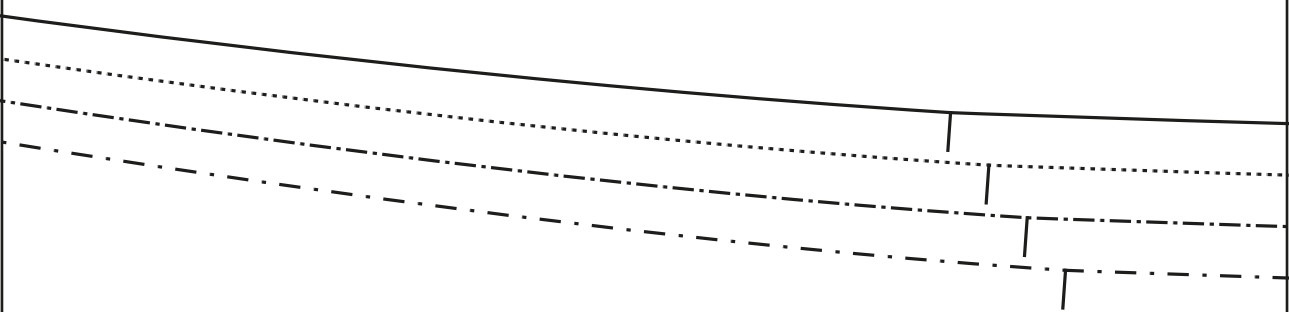


148

Kontrolmål
kontrollmål
Kontrollmall
10 x 10 cm

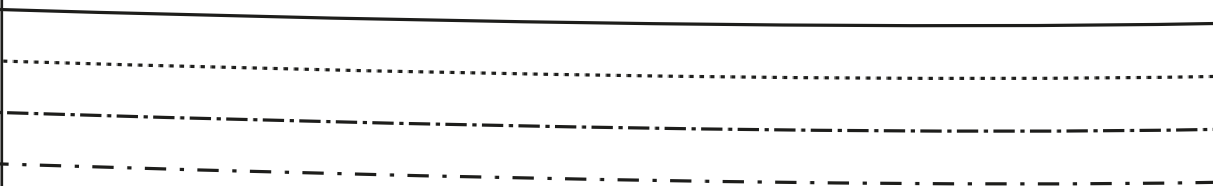
01





03

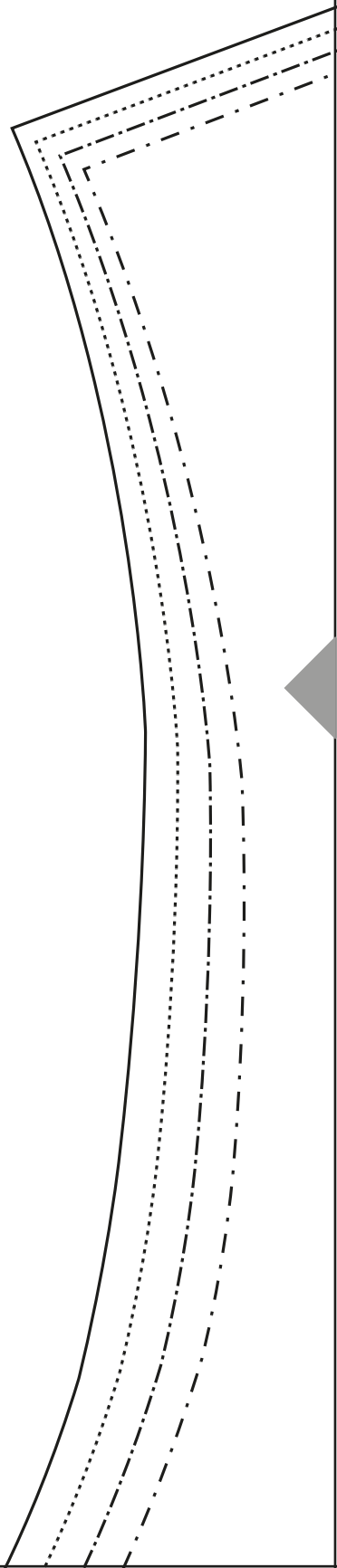


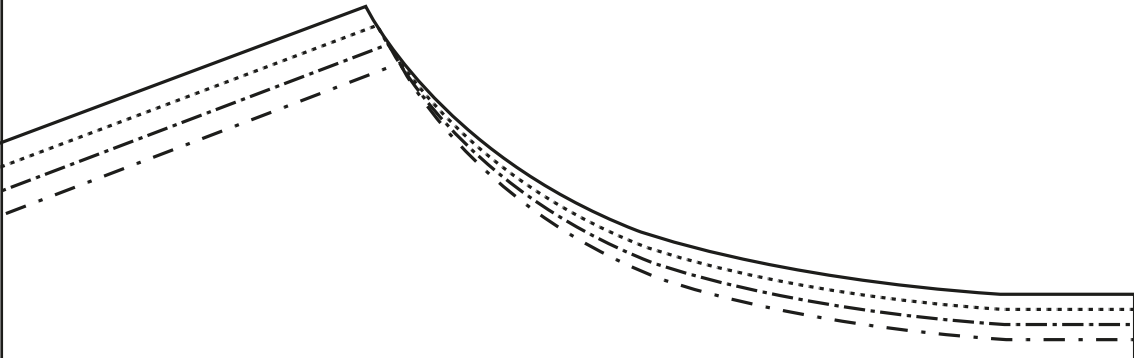


04



05





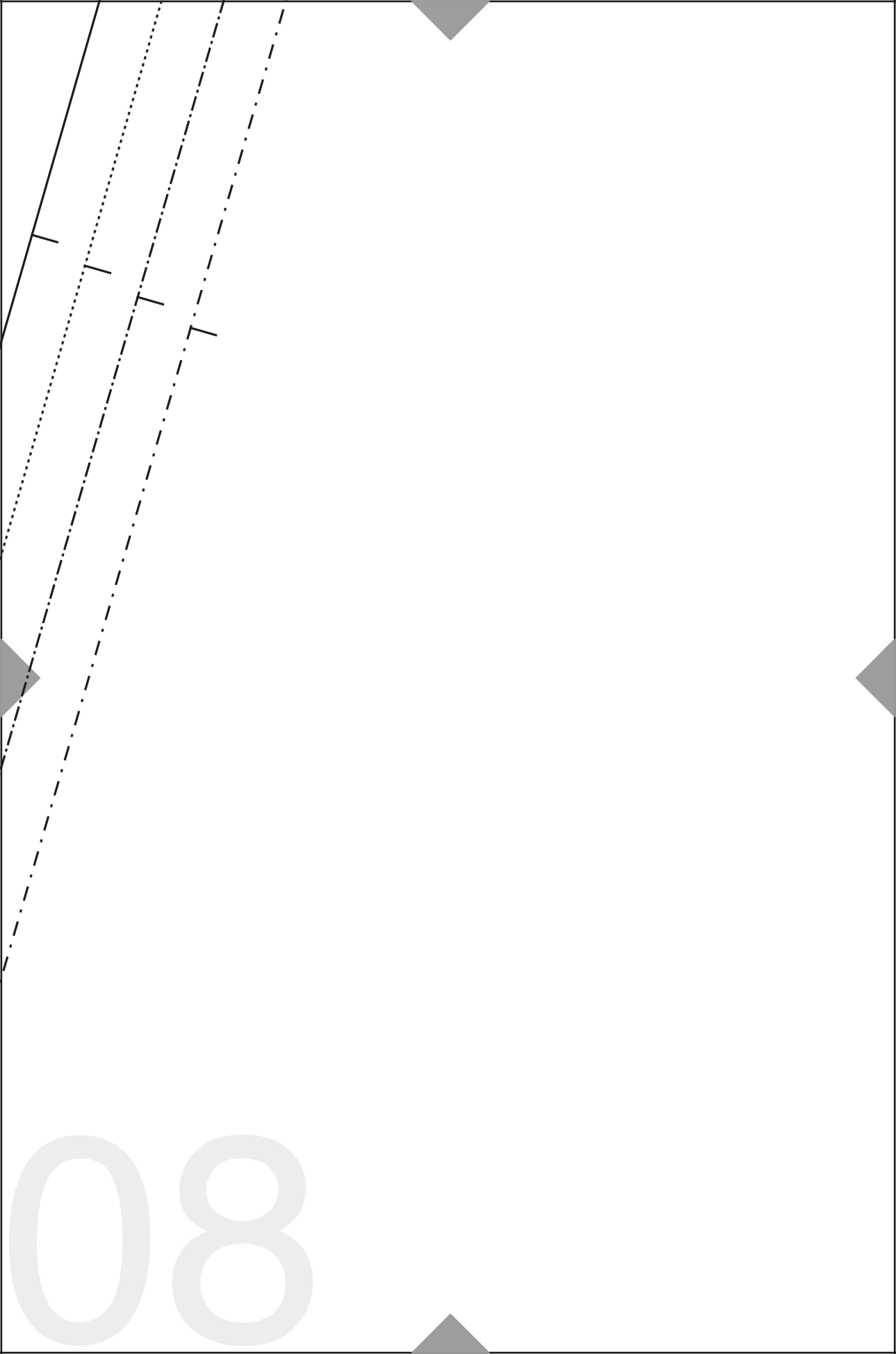
06

144 Fold/ Złożenie materiału/ Pliure

Trädr./
Kierunek nitki/
Droit-fil 148

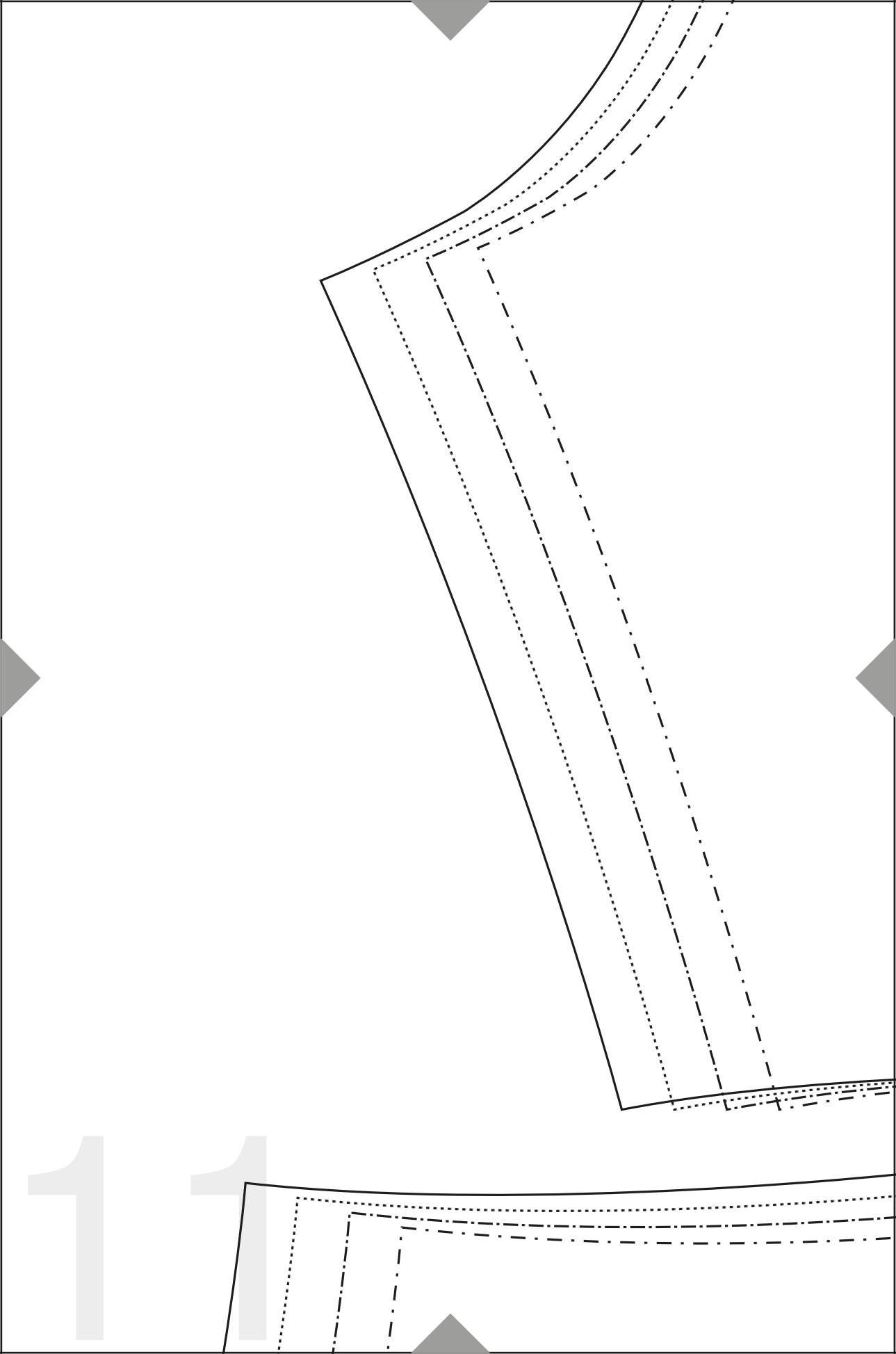
07

08



09

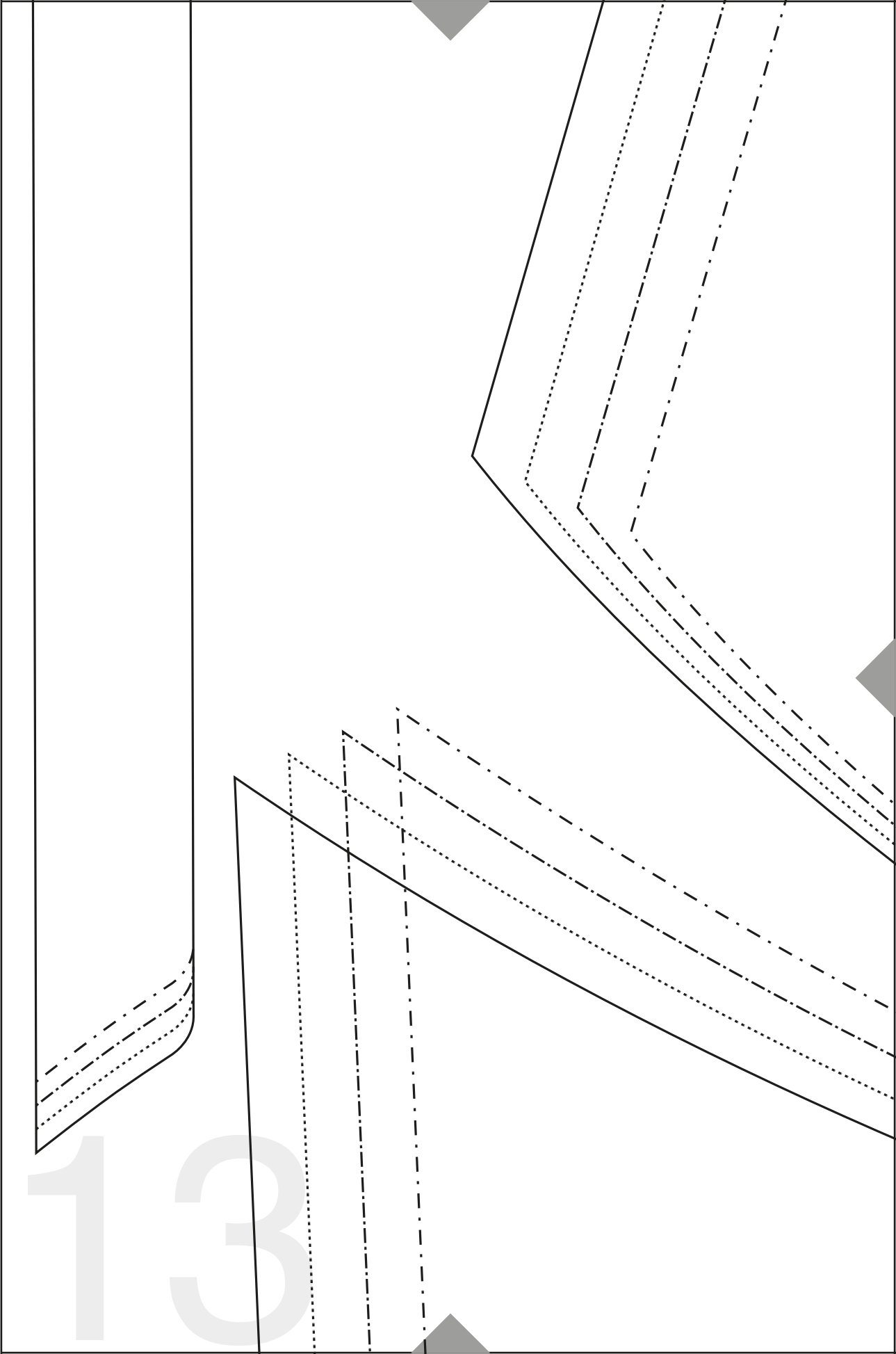
10



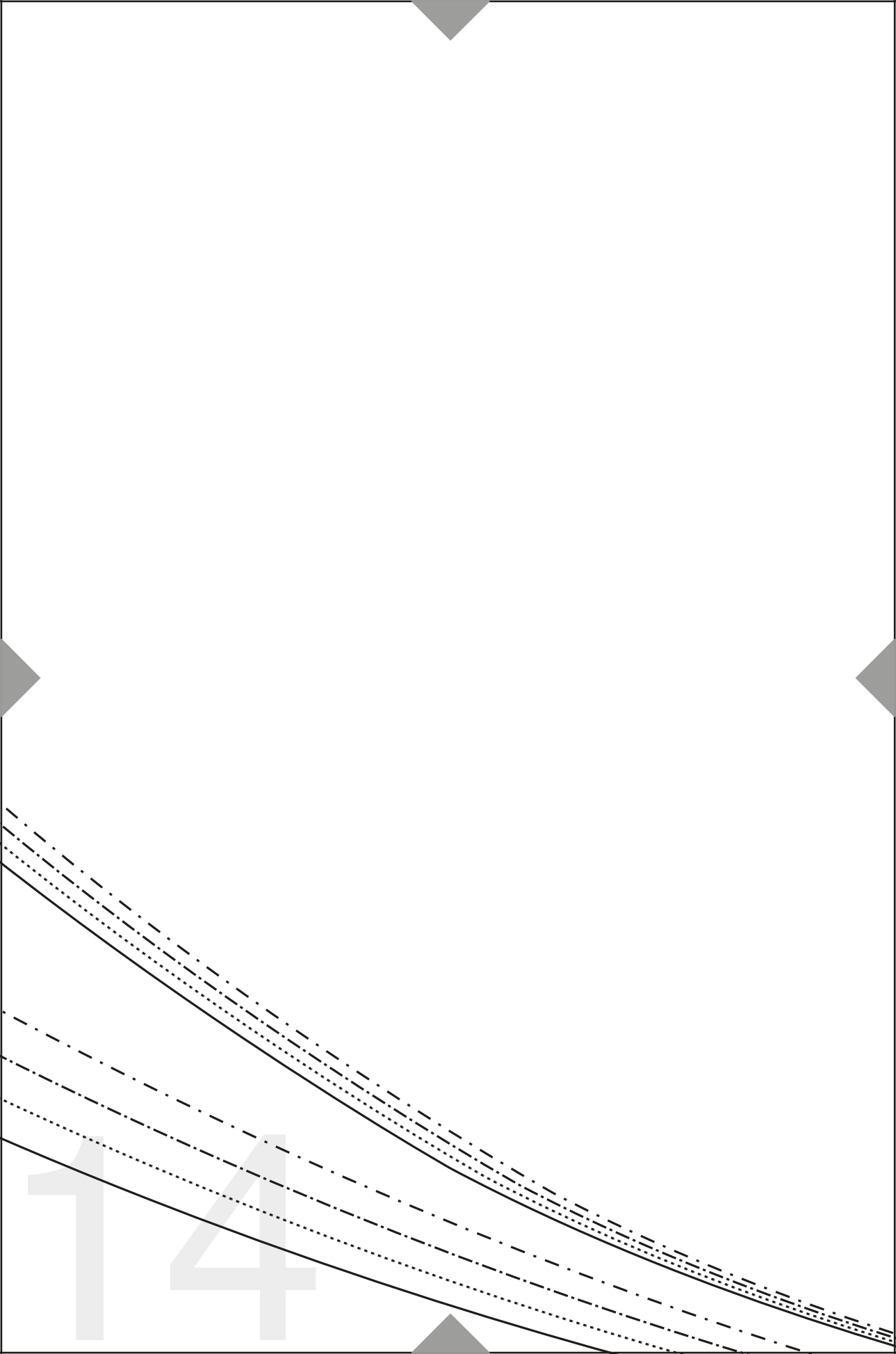
44
42
40
38

00:00:00

12

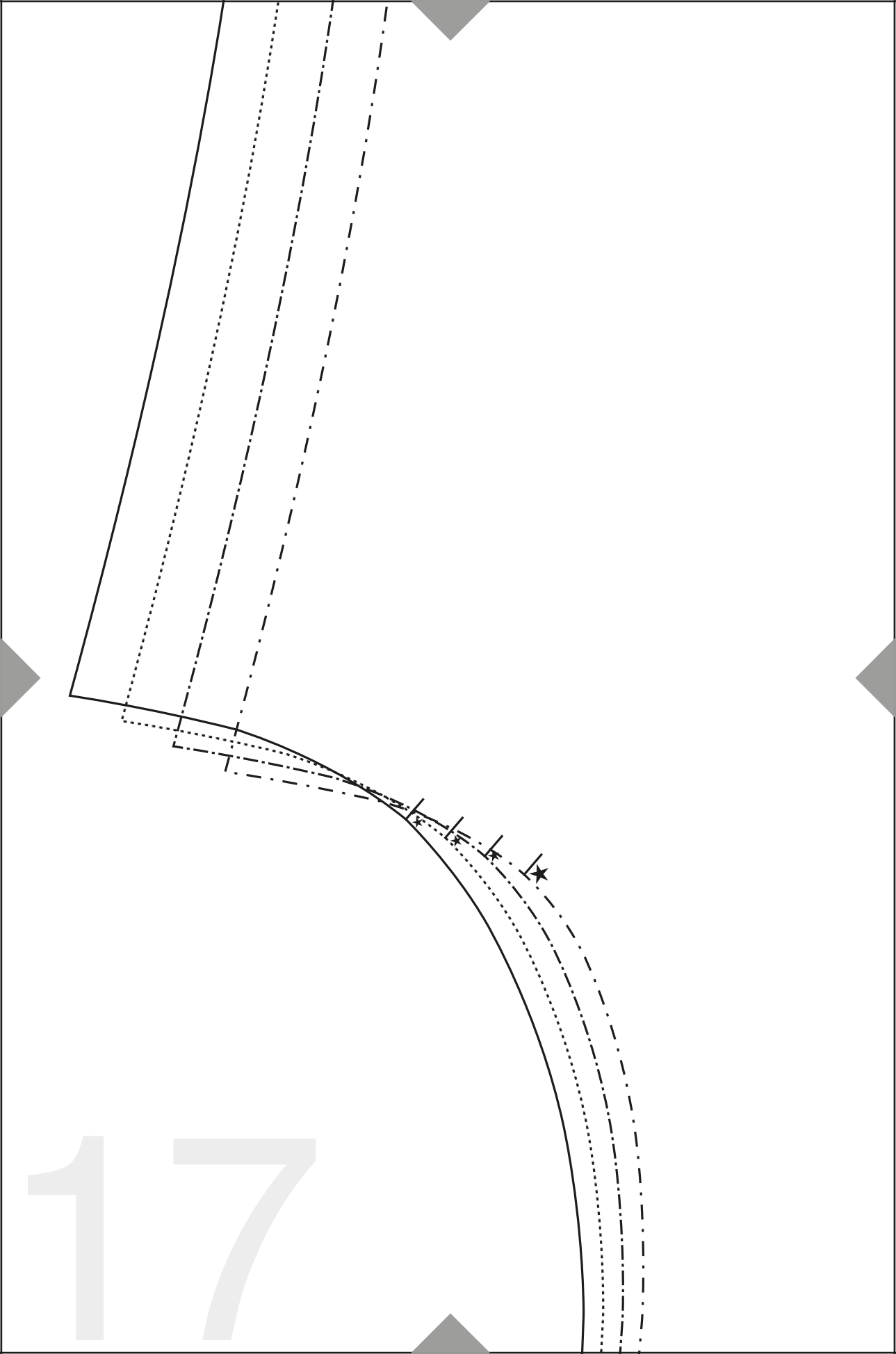


13



15

16

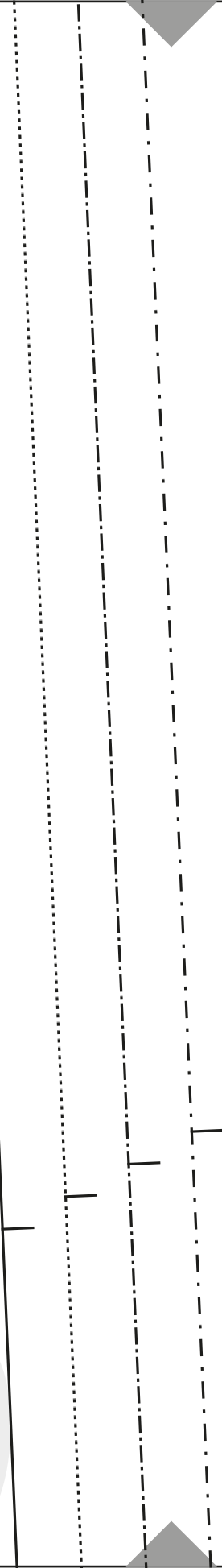


17

18



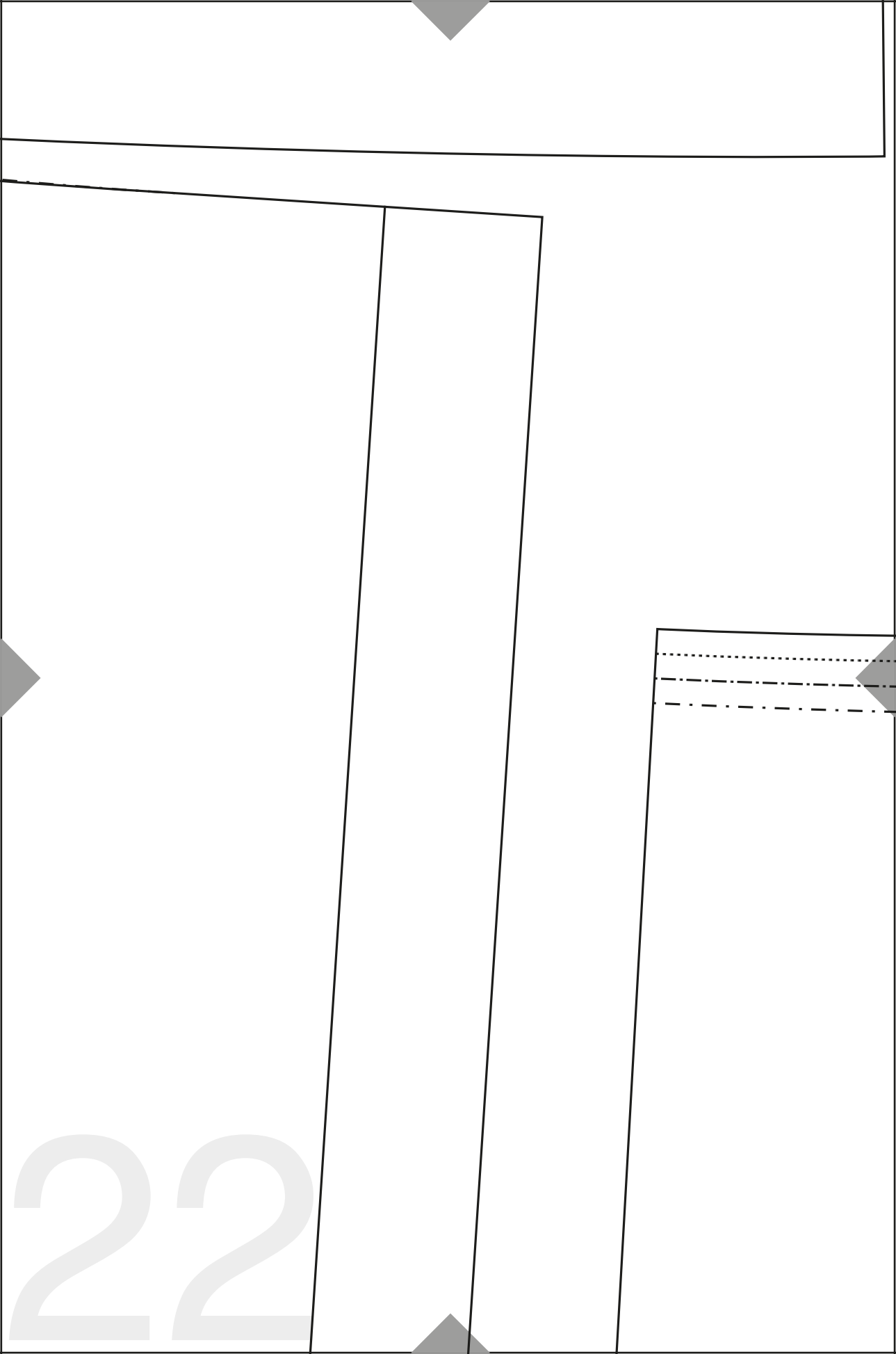
19



20

A decorative graphic at the top of the page features several curved lines in solid, dashed, and dotted styles, all curving downwards from left to right. Three grey triangles are positioned at the top and bottom corners of the page, pointing towards the center.

21

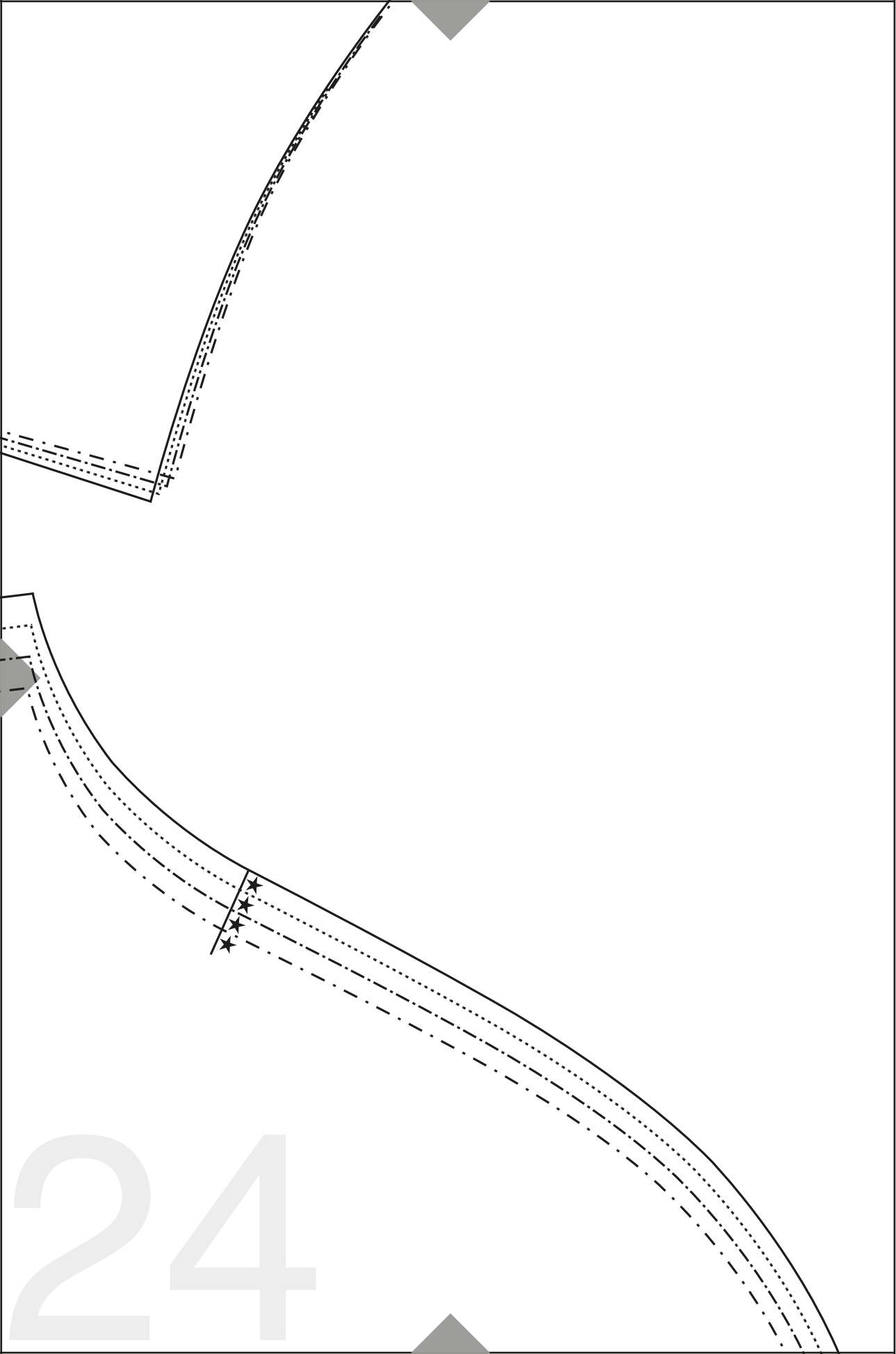


22



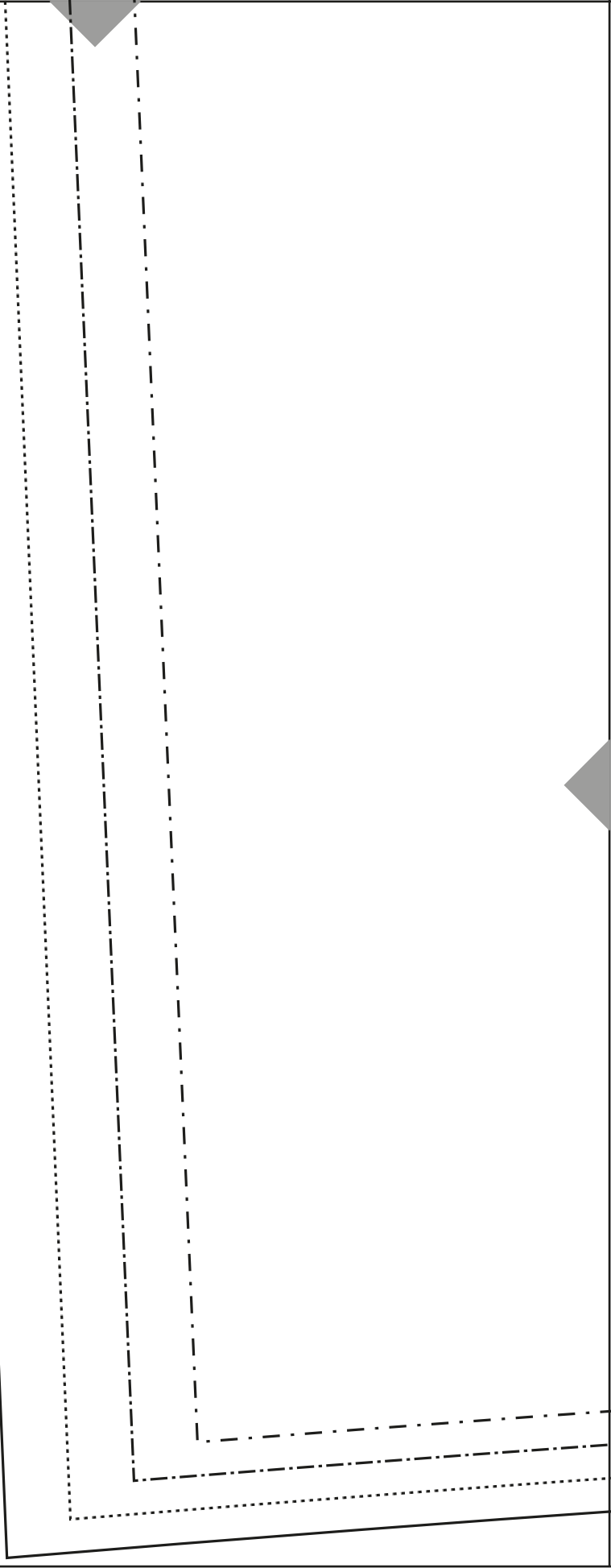
A technical drawing of a rectangular object, possibly a book cover or folder, shown in a perspective view. The drawing features a solid black outline for the main shape. A cutaway section is indicated by a dashed line, revealing a layered internal structure. The layers are represented by a solid line, a dotted line, and a dashed line. The drawing is set against a white background with a thin black border. There are four grey triangular markers at the corners of the page, pointing towards the center. The number '23' is printed in a large, light grey font in the bottom-left corner.

23

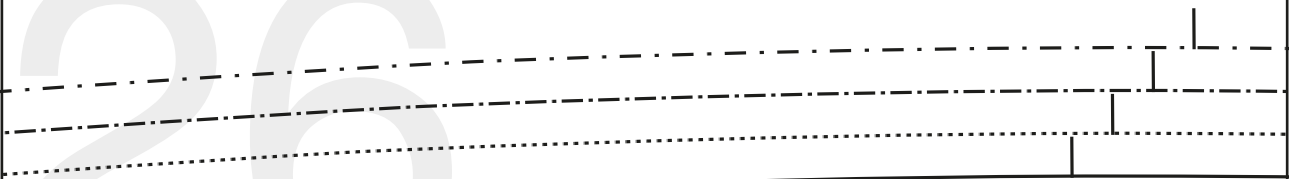


24

25



26



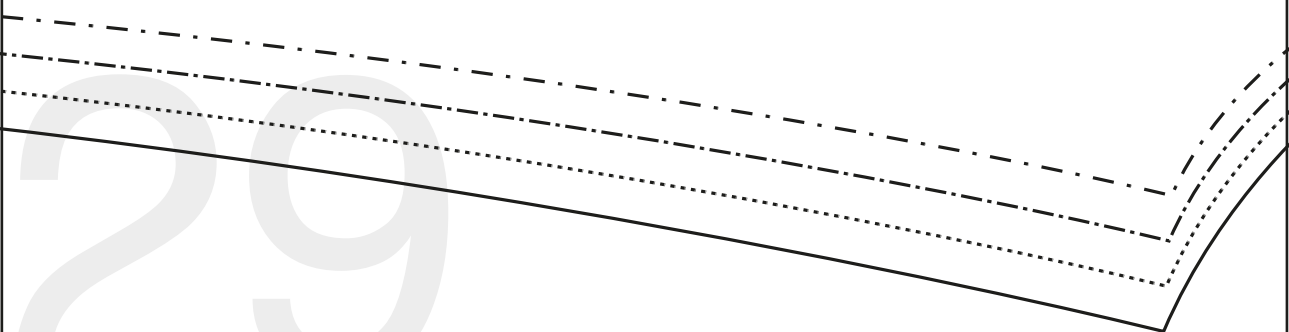
27

R
R
R
R

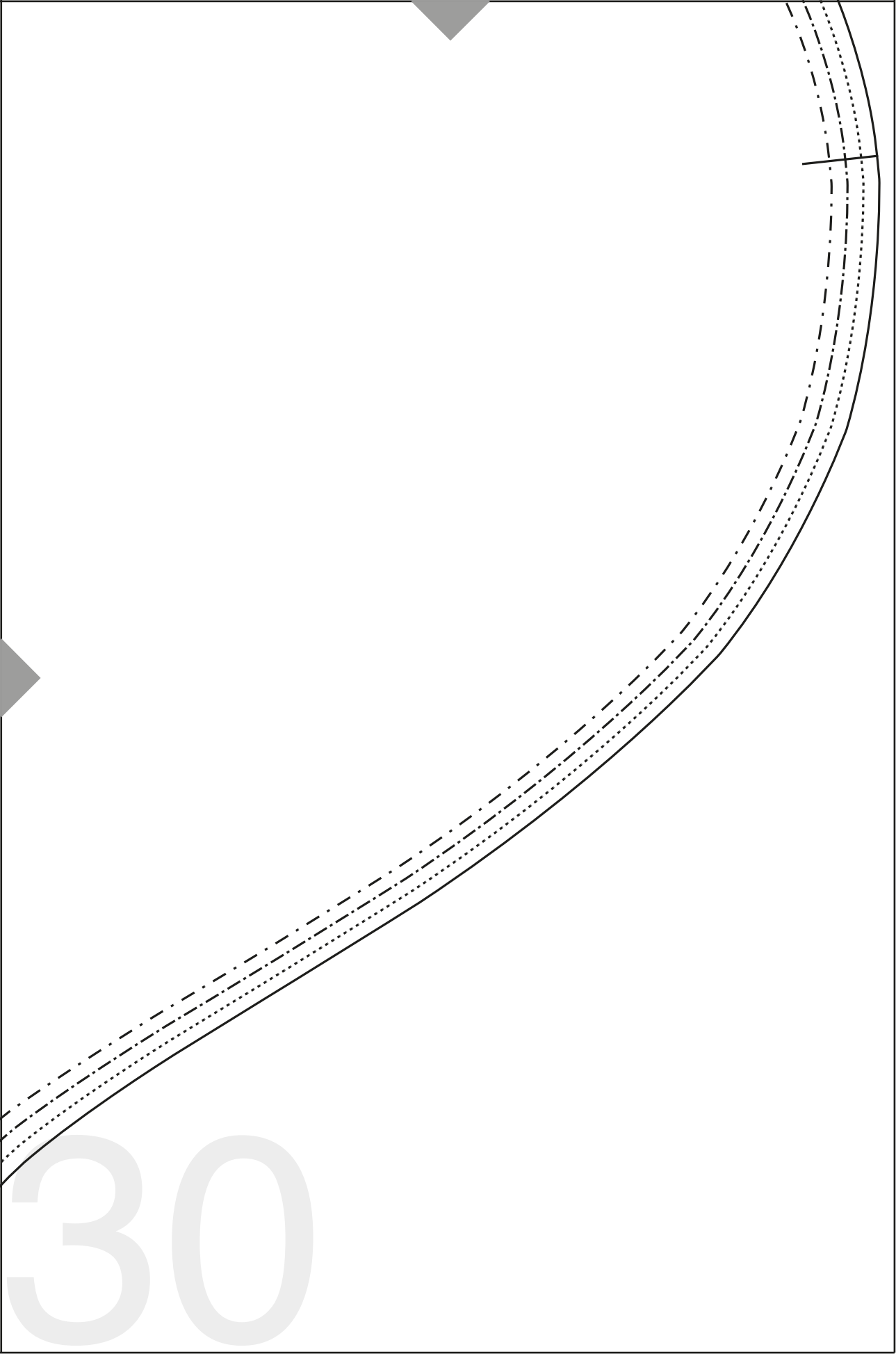
146 Trådr./ Kierunek nitki/ Droit-fil

145

Trådr. / Kierunek nitki / Droit-fil 145



29



30